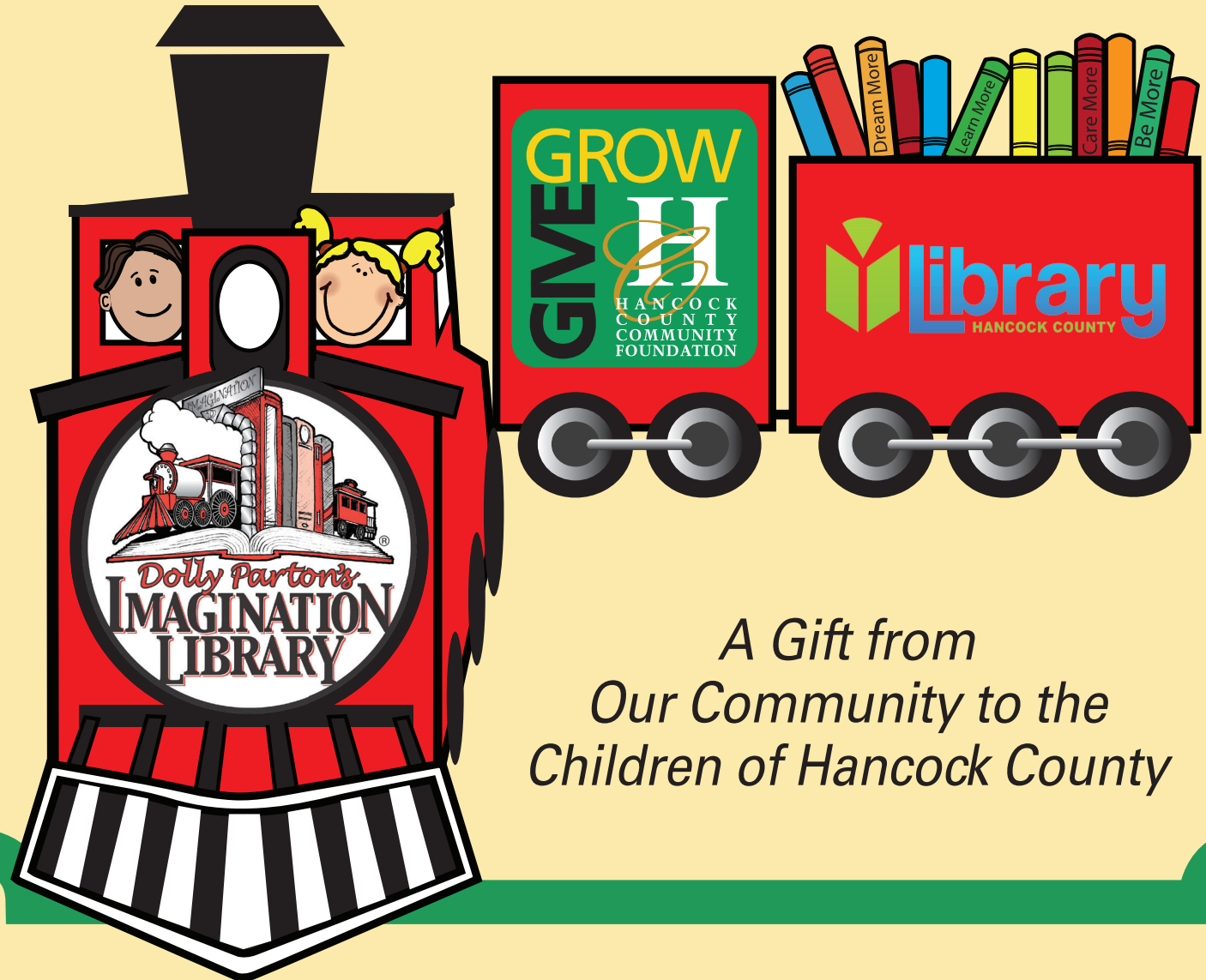




REPORT TO THE COMMUNITY

GET ON BOARD!



A Gift from
Our Community to the
Children of Hancock County

GIVE
Where You Live,
GROW
Where You Live

EDITION 3-2016



You Gave, We Matched, Great Things Happened!

What an incredible year! 2015 was marked with intense activity driven by the Hancock County Community Foundation's (HCCF) desire to maximize a matching opportunity made possible by a \$1 million Lilly Endowment grant called GIFT VI. HCCF allocated \$675,000 to match unrestricted gifts \$1 for \$1. Unrestricted resources are critically important to the well-being of our community and allow the Board of Directors the discretion to fund initiatives that enrich Hancock County, as well as, provide financial resources that strengthen organizations that provide vital services. You gave, we matched, and the challenge was met by April, 2015.

The remaining \$325,000 was allocated to match those gifts restricted for specific purposes. Per grant requirements, restricted gifts could be matched .50 for \$1. The Board allocated \$200,000 of the grant to strategically leverage the growth of endowed operating funds of nonprofit organizations. As a result, the endowments of the education foundations of Eastern Hancock, Greenfield-Central, Mt. Vernon, and Southern Hancock experienced 78% growth during a matching frenzy leading up to the celebration of Hancock County's 187th birthday on March 1. HCCF granted another \$27,751



for immediate use as described on page 3.

In March, HCCF and twelve nonprofits began gearing up for Match Day. Leveraging \$90,000 of the grant, caring people donated \$226,877.28 in 24 hours on July 24. With the match, nonprofits who normally struggle to grow funds that

ensure operating sustainment, experienced astounding growth of \$311,238.97. HCCF granted an additional \$80,000 to the organizations for immediate use as described on page 4.

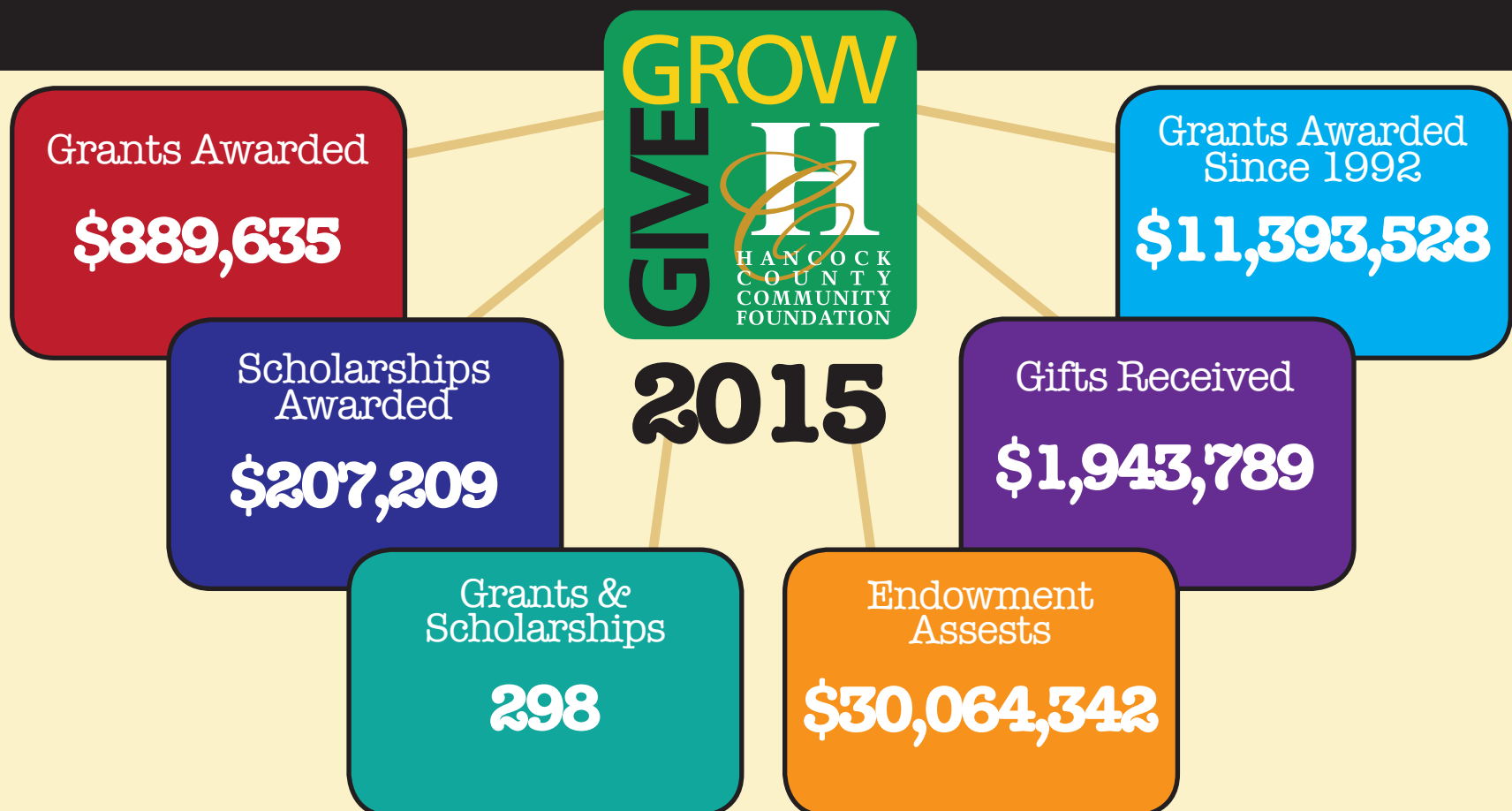
In 2015, HCCF embarked upon a mission to address a deficit in kindergarten readiness. In 2014, 28% of Hancock County children entering kindergarten scored below or well below literacy standards. After much research and input from experienced educators, HCCF identified Imagination Library as the early childhood literacy program that would be made available to all children born on or after January 1. Imagination Library, a program of the Dollywood Foundation, provides a volume of 60 age appropriate books delivered monthly to the homes of enrolled children. The program must be provided to families free of charge and is truly a gift from the community to its children. To sustain the program, HCCF launched a \$2 million dollar endowment effort in November. Upon maturity, income from this endowment will generate income to pay the \$26 per child, per year, cost of the program for all time. You gave, we matched, and \$300,000 of our \$2 million endowment goal was met.

Thanks to your generosity, HCCF met Lilly Endowment's challenge to engage our community and capture the full \$1 million grant. In the pages of this report, you will find the names of 1,840 donors who gave 4,100 gifts and a summary of \$1,096,844 grants made possible through the generosity of caring people. Thank you for joining us in our never ending quest to enrich and enhance life through philanthropy.

Bob Bogigian
Board Chair

Mary Gibble
President

1



What Can You Do to Make a Difference?

We help you answer these questions...

1. How can I make a difference?
2. What are the community's most pressing needs?
3. How can I pass my charitable values on to my children or grandchildren?
4. How can I leave a legacy?

We accept a variety of gifts, either now or as part of your estate planning.

- | | | |
|-------|----------------------------|------------------|
| Cash | Bequests of Wills & Trusts | Retirement Plans |
| Stock | Real Estate | Life Insurance |

If you are interested in guaranteed lifetime income, we are happy to talk with you about gift annuities and charitable remainder trusts. Learn more at giveHCgrowHC.org or call Mary Gibble, President at (317) 462-8870.

The Hancock County Community Foundation is a public charity, and gifts made to any of our 270 funds are tax deductible. HCCF will send you an acknowledgement of your gift and a tax receipt. Give on-line or mail gifts to **312 E. Main Street, Greenfield, IN 46140.**

The Magic of Matching Gifts

You gave, we matched, and great things certainly did happen! Photos capture the excitement around three matching opportunities: Happy Birthday Hancock County, Match Day, and the Imagination Library Express. The efforts were wildly successful thanks to the generosity of caring people and the GIFT VI grant HCCF received from Lilly Endowment.



Hancock County Community Foundation, Inc. and Affiliate CONSOLIDATED STATEMENTS OF FINANCIAL POSITION December 31, 2015 and 2014

	2015	2014
ASSETS		
Cash and cash equivalents	\$ 1,851,268	\$ 2,456,966
Investments	29,551,910	29,962,297
Accounts receivable	143	-
Pledges receivable	127,382	177,729
Prepaid expenses	35,613	40,943
Property, building and equipment, net	856,180	875,104
	<u>\$32,422,496</u>	<u>\$ 33,513,039</u>
LIABILITIES		
Accounts payable	\$ 38,885	\$ 8,257
Grants payable	44,438	69,258
Deferred revenue	102,927	615,088
Annuity reserves	323,518	302,466
Agency funds	239,270	238,933
Total liabilities	749,038	1,234,002
NET ASSETS		
Unrestricted	(1,409,844)	245,653
Temporarily restricted	3,973,949	4,924,644
Permanently restricted	29,109,353	27,108,740
	<u>31,673,458</u>	<u>32,279,037</u>
	<u>\$32,422,496</u>	<u>\$ 33,513,039</u>

Gifts are professionally invested with the following objectives:

- Preservation of permanent assets (endowment funds);
- Protection of these assets from inflation; and
- Enhancement of the fund assets through market appreciation. The Foundation annually distributes a portion of each fund's generated income as designated by the donor to meet the needs of their favorite charitable causes or organizations both now and forever.

Hancock County Community Foundation, Inc. and Affiliate CONSOLIDATED STATEMENT OF ACTIVITIES Year Ended December 31, 2015

	2015			
	Unrestricted	Temporarily Restricted	Permanently Restricted	Total
SUPPORT AND REVENUE				
Contributions	\$ 1,121	\$ 123,766	\$ 2,000,613	\$ 2,125,500
Administrative fee income	417,005			417,005
Investment income	324,110	711,917		1,036,027
Realized gains (losses) on investments	(629,911)	213,202		(416,709)
Unrealized losses on investments	(250,438)	(1,421,548)		(1,671,986)
Change in gift annuity reserve		(28,309)		(28,309)
Change in cash surrender value of life insurance		378		378
Rental income	27,345			27,345
Farm income	33,721			33,721
Loss on disposal of assets	(8)			(8)
Other income	60,516			60,516
	(16,539)	(400,594)	2,000,613	1,583,480
Net assets released from restrictions				
Restrictions satisfied by payments	550,101	(550,101)		
EXPENSES				
Program services				
Grants and scholarships	897,286			897,286
Program expenses	296,156			296,156
Supporting services				
Management and general	269,387			269,387
Investment trustee fees	102,730			102,730
Administrative fees	414,990			414,990
Development expenses	208,510			208,510
	<u>2,189,059</u>			<u>2,189,059</u>
CHANGE IN NET ASSETS	(1,655,497)	950,695	2,000,740	(605,579)
Net assets at beginning of year	245,653	4,924,644	27,108,740	32,279,037
Net assets at end of year	<u>\$(1,409,844)</u>	<u>\$ 3,973,949</u>	<u>\$ 29,109,353</u>	<u>\$ 31,673,458</u>

Complete Independent Auditors' Report and Notes to Financial Statements are available. To obtain, please call (317) 462-8870 to request a copy.

Independent & Healthy

The mission of Meals on Wheels of Hancock County is very clear: Improve the health and quality of life of seniors so that no one is left hungry or isolated. A simple statement, but a daunting problem. Kathleen Vahle, Executive Director, recently presented Meals on Wheels America's research to share the need in our community.

TOO MANY SENIORS IN INDIANA ARE LEFT BEHIND, ALONE AND HUNGRY, STRUGGLING TO STAY INDEPENDENT AND HEALTHY.

328,057 are isolated, living alone
 140,684 are threatened by hunger
 362,858 are living in or near poverty



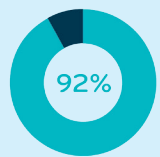
Nationally, 1 IN 6 seniors struggles with hunger

Meals on Wheels of Hancock County served 19,056 meals to 121 clients in 2015. This could only be accomplished by the 195 volunteers who donated over 3,300 hours. It takes about 140 volunteers to make 700 deliveries and provide approximately 1,200 meals each month. By increasing the opportunity for independence through meal delivery, Meals on Wheels America's research confirms:

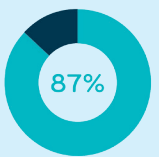
MEALS ON WHEELS DELIVERS THE SUPPORT THAT KEEPS SENIORS IN THEIR OWN HOMES, WHERE THEY WANT TO BE.



say it improves their health



say it enables them to remain living at home



say it makes them feel more safe and secure

"The senior citizens we serve are the same people who helped shape our nation. Using their minds, ingenuity and hard work, they were there when we needed them. They fought for our freedom, invented machines, developed medicines, dared to dream and ensured a brighter future for us all. Their stories are our stories," says Kathleen.

HCCF has supported the mission of Meals on Wheels with grants of over \$88,000. In 2001, HCCF was the first to provide the start-up funding needed for the establishment of a local office, staffing and meal deliveries. Ongoing funding has been provided for staff training, volunteer gas cards, consulting, and client financial assistance.

Kathleen shared the many ways volunteers can get involved: deliver meals, pack meals, financially sponsor a client, consider board membership, and attend fundraisers. For more information she can be reached at 317-477-4345 or Kathleen@mealsonwheelsonline.org. Meals on Wheels is located at 1133 W. Main Street, Suite C, Greenfield.



Taylor Sturgis, the littlest MOW volunteer

Grants Make a

Capital Improvement and Preservation Grants

- Greenfield Area Chamber of Commerce Building Preservation Fund**
Greenfield Area Chamber of Commerce — \$15,043
- Nameless Creek Youth Camp Capital Campaign Fund**
Nameless Creek Youth Camp — \$40,129
- Hancock County Exposition Complex Project Fund**
Hancock Co. 4-H Agricultural Association, Inc. — \$40,700
- Hancock County Veterans Memorial Non-Permanent Fund**
Hancock County Veterans' Park, Inc. — \$4,212

Corporate Advised Grants

- NineStar Connect Ray of Light Fund**
Hancock Co. Community Corrections — \$1,500

Donor Advised Grants

- Armstrong-Maple Family Endowment Fund**
Central Indiana Land Trust — \$300
Hancock Co. Cmty. Foundation - Enrichment Fund — \$200
Sugar Creek Pennsy Trail Fund — \$300
- John C. Beeson Humanitarian Endowment Fund**
Buck Creek Township Fire Department — \$3,000
Love INC of GHC — \$4,000
- W. Dale and Eva C. Miller Family Fund**
Hancock Co. Cmty. Foundation - Imagination Library — \$3,070
- Pearson and Jeannine Miller Donor Advised Charitable Fund**
Hancock Regional Hospital Foundation — \$12,500
Mt. Vernon Education Foundation — \$1,000
Wabash Conference - FMCNA — \$8,000
Oakdale Christian Academy — \$2,000
- The Archangel Fund**
St. Michael's Catholic School — \$9,300
- The Mohr Family Fund in memory of Cecilia**
Edelweiss Equine Assisted Therapy Center, Inc. — \$1,000
- Walter W. Mitten Family Endowment Fund**
Mohawk United Methodist Church — \$600
- Wendell and Cissa Smith Charitable Fund**
Park Chapel Christian Church — \$11,152
- White Family Foundation**
Eastern Hancock Education Foundation — \$5,000
Edelweiss Equine Assisted Therapy Center, Inc. — \$5,000
Hancock Co. Cmty. Foundation - Celebrating Communities — \$25,000
Jane Ross Reeves Octagon House Foundation — \$5,000
Knightstown Public Library — \$2,000
Meals on Wheels — \$1,500
Psi Iota Xi - Gamma Eta Chapter — \$500
Shirley Community Visionaries — \$7,000
Shirley Indiana Police Department — \$3,500
- Wortman Family Donor-Advised Endowment Fund**
Hancock Co. Community Foundation — \$1,000
Hancock Co. Cmty. Foundation - Imagination Library — \$1,000
Hancock Co. Senior Services — \$500
Hancock Regional Hospital Foundation — \$12,000
Love INC of GHC — \$500

Donor Designated Grants

55 Grants to Nonprofits Across the US — \$233,810

Education Grants

- Eastern Hancock Education Foundation — \$7,698
- Greenfield Central School Foundation — \$6,000
- Mt. Vernon Education Foundation — \$5,925
- Southern Hancock Education Foundation — \$8,128
- FAFSA Day Support — \$7,300
- Eastern Hancock Education Foundation Non-Permanent Fund**
Eastern Hancock Elementary School — \$2,219
Eastern Hancock High School — \$5,100

Preparing Youth for Kindergarten

Each year, HCCF is proud to honor the memory of Martha Beckenholdt by awarding a junior from one of the four Hancock County public high schools who exhibits Martha's qualities...outstanding contributions of time, talent, and energy to philanthropic endeavors. A \$500 grant in the recipient's name is donated by HCCF to a charity of the student's choice.



Emily Jones helps Kindergarten 101 participants become comfortable on school playground equipment.

Emily Jones, daughter of Jeff and Stephanie Jones and a student at Greenfield-Central High School received the 2015 award for her work with the Kindergarten 101 Program. The program provides a week-long kindergarten experience for children and families who have been unable to take part in preschool education opportunities. Emily has volunteered with the Kindergarten 101 Program for four years, donating over 300 hours of her time. Her volunteer activities included assisting with the preparation of the program and working with the children to become acclimated with school environment.

Additionally, the Eugene & Marilyn Glick Foundation matched HCCF's grant with an additional \$500. In honor of Emily's award, Hancock County Purdue Extension received a grant total of \$1,000 for the Kindergarten 101 Program.

Big Difference!

Greenfield Central School Foundation Endowment Fund
Greenfield Central School Foundation — \$4,079

Leaders in Navigating Knowledge Operating Endowment
LINK — \$21,989

Mt. Vernon Education Foundation Endowment Fund
Mt. Vernon Education Foundation — \$3,556

Vaughn Performing Art People's Choice Award
Eastern Hancock High School — \$500

Field of Interest Grants

Addictions and Substance Abuse Education and Treatment Endowment Fund
Families First Indiana, Inc. — \$7,051

Arts and Culture Fund
KidsPlay, Inc. — \$680

Philip R. Hollenbaugh Photography Endowment Fund
St. Michael's Catholic School — \$410

Prevent Child Abuse Endowment Fund
Alternatives Inc. of Madison Co. — \$926

Robert W. Maxwell and Vera S. Maxwell Charitable Endowment Fund
Hancock Regional Hospital Foundation — \$2,227

The William Harold and Mary Katherine Kingery Friends of Domestic Animals End. Fund

Almost Heaven Farm Sanctuary — \$1,500
Frenzy Animal Rescue, Inc. — \$7,000
Greenfield Hancock Animal Management — \$6,000
Partners for Animal Welfare Society — \$10,525

W. H. and Lola Reason Endowment for Patriotism Fund
American Military Heritage Foundation — \$610

Match Day Grants

Bradley United Methodist Church — \$7,879
FUSE — \$6,329
Greenfield Parks and Recreation — \$4,305
Hancock Co. 4-H Agricultural Association, Inc. — \$5,284
Hancock Co. Food Pantry — \$12,017
Hancock Co. Public Library — \$5,704
Hancock Co. Senior Services — \$5,518
Hancock Hope House — \$8,289
LINK — \$3,073
Love INC of GHC — \$7,714
Nameless Creek Youth Camp — \$8,544
Sugar Creek Twnshp. Trustee - Sugar Creek Township Park — \$8,343

Operating & Programming Grants

Alternatives Inc. of Madison Co. — \$2,849
American Military Heritage Foundation — \$2,000
Connect2Help 2-1-1 — \$2,000
Exchange Club of Hancock County — \$500
Friends of Hancock County Pennsy Trails — \$1,000
Girls on the Run of Central Indiana — \$1,600
Greenfield Main Street, Inc. — \$2,300
Hancock Co. 4-H Agricultural Association, Inc. — \$3,350
Kenneth Butler Memorial Soup Kitchen — \$3,500
KidsPlay, Inc. — \$520
Life Choices Care Center -The Landing — \$1,000
Meals on Wheels of Hancock County — \$6,000
Mental Health Partners of Hancock County — \$1,100
New Palestine Main Street — \$500
Purdue University - Kindergarten 101 — \$2,000
Servants at Work, Inc. — \$900
Shirley Indiana Police Department — \$3,687
The Chris Lytle Foundation — \$1,500
Women's Resource Center — \$2,000
Zion Lutheran School - Dani's Dreams Outdoor Education Center — \$1,000

Women's Fund Grants

Women's Fund of Hancock County
Women's Resource Center — \$15,169

For information on grant guidelines and application opportunities, visit giveHCgrowHC.org, "Grants" Tab

Enrich and Enhance

HCCF made grants to support projects identified through a three year process of working with the citizens of each community to celebrate assets and address needs. Although each participating community is in a different stage of growth and planning, all are moving forward. The Celebrating Communities initiative celebrates community individuality with the mission of enriching life through a unified county vision.

Fortville

Acoustic Work in
Community
Center Gym
\$ 9,500

Wilkinson

Merry-Go-Round in Weir
Cook Community Park
\$ 6,300

McCordsville

McCordsville
Town Hall Park
\$ 8,300

Greenfield

Greenfield Parks & Recreation
Bicentennial History Panel
\$ 6,000

Greenfield Main Street
Painted Mural Along Pennsy Trail
\$ 2,000

Shirley

Centennial &
Historical Society
Train Caboose Move
& Shelter Slab
\$ 8,700

Cumberland

Tennis Court Repairs
in Lions Park
\$ 6,855

Charlottesville

Replace Siding on
Charlottesville
Lions Club Building
\$ 9,670

New Palestine

Trails and Alternative
Transportation Plan
\$ 7,675

Celebrating Communities
& **Enriching the**
Quality of Our Place

Animal Welfare

In 2008, a gift arrived at HCCF that would forever impact the welfare of Hancock County animals and the organizations that provide care to them. Through her estate gift, Mary Kingery created the The William Harold and Mary Katherine Kingery Friends of Domestic Animals Endowment. Each year, income from the fund is made available to organizations whose mission is to provide care, shelter, and adoption services for domestic animals. Partners for Animal Welfare or PAWS received a \$10,525 grant from the fund to support Operation Fix-It, a Trap/Neuter/Return (TNR) program and rent expenses.

In the four years that PAWS has offered Operation Fix-It, 463 individuals, businesses, and families from 21 communities have had over 1,400 cats spayed or neutered and vaccinated for rabies. Hancock County residents benefit from the program through the reduced cost for the surgery. "PAWS programs benefit EVERY Hancock County resident by assuring that there are fewer homeless pets and community cats running at large and that community cats are healthy and vaccinated against rabies," said Nancy Rubino, PAWS Executive Director.

In addition to the Fix-It program, PAWS annually rescues, cares for, and rehomes over 300 cats, kittens, dogs and puppies. The PAWS Pet Food Pantry annually provides over 5,000 pounds of free pet food and other pet supplies to elderly, handicapped, temporarily disabled, unemployed, and low income Hancock County pet owners. "This program empowers these pet owners to keep their pets rather than being forced to give them up," shares Nancy.



PAWS rescued sister kittens, Paris and Pandora, who await adoption. Their mother was spayed under the Feline Fix Program.

Sharon Yates



Those who knew Sharon enjoyed her kind and caring presence. She grew up in Gary, Indiana and later moved to the Indianapolis area. Sharon and her husband, Tom, were members of St. John United Church of Christ in Cumberland where they volunteered many hours. They also spent countless hours volunteering at the Altenheim

Assisted Living Center and the American Red Cross.

Sharon had a soft spot for children and animals, especially cats and dogs. Her passion was evident in the gift she left through her estate to create a permanent fund for the care of animals. Income from the Sharon Yates Endowment Fund for the Care of Animals will forever support Hancock County organizations addressing the well-being of domestic animals, including but not limited to shelter, adoption, and spay/neuter services

Sharon and her husband enjoyed traveling, especially going to Florida in the colder months. After the deaths of her husband and three children, Sharon devoted her time to close friends and to causes she cared about. Her philanthropy aligned with her love of community as defined in the Sharon Yates Community Development Fund which provides unrestricted income allowing HCCF the discretion to make grants that meet needs and opportunities as they evolve and change in our community over time.

Sharon used the simplest form of estate planning to direct the creation of these funds upon her death. By naming the Hancock County Community Foundation in her Will and directing the creation of the aforementioned funds in the language of her Will, HCCF will forever serve as an instrument of her generosity. Through careful stewardship and diligent administration, many people and organizations will continue to benefit from Sharon's generosity.

Valeda Foust

A lifelong resident of Hancock County, Valeda was born on April 29, 1911. After graduating from Westland High School, she attended Indiana University to earn a degree in teaching. Valeda taught business, typing, shorthand and English at Hancock Central High School and Greenfield High School. After 25 years of dedicated service, she retired in 1970. Valeda and her husband, "Peanut" Everett lived on a farm and raised black angus cattle in eastern Hancock County until his death in 1991.

Valeda was a member of Greenfield Christian Church, Miriam No. 64 Order of the Eastern Star, a member of the Hancock County Retired Teachers Association, and a member of the Hancock Regional Hospital Guild. She is remembered for her love of reading, knitting hats for nieces and nephews, camping, and participation in Bible studies. "Valeda was a huge IU fan and loved IU basketball," shared niece Linda Campton.

Faith and family influenced Valeda's charitable intentions. When meeting with her professional advisors in 2003, she was very mindful of her church community and the well-being of her sister-in-law, Daisy. Valeda established a revocable trust that made partial distribution to HCCF in 2008 to create the Valeda M. Foust Charitable Endowment Fund. The annual income from the fund supports the ministerial work of Greenfield Christian Church.

Also in 2003, Valeda arranged that Daisy would receive income from the remaining balance of the trust until her death. Daisy Foust passed away in December, 2015, and the remainder of Valeda's trust came to HCCF as an additional gift to the endowment fund benefitting Greenfield Christian Church.

Valeda passed away in 2008, but her legacy lives on. Her planning and purpose exemplifies the ability to care for our loved ones AND make a tremendous charitable impact... forever.

A Charitable Bequest in Your Will or Trust

The simplest and most common way to leave your legacy is to designate a gift or percent of your estate to set up or give to an existing endowment fund; in some cases, you may receive a substantial reduction in federal gift and estate taxes while supporting a charitable cause. Include a simple statement in your will or trust such as:

"I give [a specific \$ sum] or [percentage of my estate] or [number of shares of stock of X Company] to the _____ Fund, a component fund of the Hancock County Community Foundation, 312 E. Main Street, Greenfield, Indiana." Optional, additional language: "The Hancock County Community Foundation, Inc. is an Indiana nonprofit corporation exempt from federal income taxes under Internal Revenue Code section 501(c)(3), a public charity and accordingly an appropriate institution within which to establish a charitable fund."

New Funds

- Sharon Yates Community Development Fund
- Sharon Yates Fund for the Care of Animals
- Robert D. and Norine G. Willits Community Development Fund
- Kenneth Butler Memorial Soup Kitchen Operating Fund
- Southern Hancock County Veterans Memorial Park Fund
- Kenny and Wilma Phares Community Development Fund
- Doug and Sharon True Community Development Fund
- Pritzke Family Community Development Fund
- Pritzke Family Charitable Endowment
- Jim and Pat Dunlavy Community Development Fund
- Imagination Library of Hancock County Fund
- Christina Kellermeier Memorial Fund
- Patricia Orr Allemeier Memorial Nursing Endowment
- Legacy Properties of Hancock County Community Foundation Operating Fund
- The Reading with Riley Statue Project Fund
- Edelweiss Equine Assisted Therapy Center, Inc. Operating Fund
- Cheryl Wilfong Charitable Gift Annuities

5

Mr. and Mrs. William Abel	Ard/Weston Family	Mr. and Mrs. Scott Bell	Mr. and Mrs. Joseph P. Borrelli	Ms. Cheryl A. Bruns	Mr. and Mrs. Robert Castetter	Barb Smith, Cordis, LLC	Ms. Tatiana Day	Mr. and Mrs. Mike Dunlavy
Mr. and Mrs. Pierre Absi	Mr. and Mrs. Andy Ariand	Mr. and Mrs. Stephen Bender	Ms. Diana Boss	Mr. Robert R. Bucy	Mr. and Mrs. David Caudill	Mr. and Mrs. Steven Deal	Mr. and Mrs. Benny Eaton	Mr. and Mrs. James Dunnichay
The Abstract Shack, Inc. Miriam Rolles	John and Suzanne Ariand	Dr. and Mrs. Robert L. Benefiel	Dr. and Mrs. Richard E. Bowen	Mr. Danny Buechler	Mr. and Mrs. Darrin Couch	Mr. and Mrs. Christopher Dean	DuPont Pioneer	Steve and Donna Durack
Mr. and Mrs. Howard Adams	Mr. and Mrs. George L. Armstrong	Mr. and Mrs. David Benjamin	Ms. Sharon Bower	Ms. Judy L. Buelke-Sam	CGS Services, Inc.	Mr. and Mrs. Matthew Dearmond	Mr. Ronald Duzan	Mr. and Mrs. Steve Eads
Mr. Kevin L. Adams	Ms. Kathryn Armstrong	Dr. and Mrs. David H. Berg	Ms. Rebecca Bowling	Mr. and Mrs. Robert L. Buenger	Ms. Joan Champagne	Mr. and Mrs. Dennis M. DeCapua	Mr. and Mrs. Chris Eads	Eagle 2 Petroleum LLC
Mr. and Mrs. Paul E. Adams	Brad and Mary Arthur	Berkshire Hathaway	Ms. Laurie Bowman	Mr. and Mrs. James R. Bullard	Ms. Mary Champagne	Mr. Alan S. Cox	Eastern Hancock Education Foundation	Eastern Hancock Elementary P.T.O.
Mr. and Mrs. Clinton E. Addington	Ms. Carol S. Arthur	HomeServices Indiana Realty	Ms. Bonnie Boyd	Mr. and Mrs. Douglas Burdine	Dennis and Evelyn Chapman	Mr. and Mrs. Larry A. Deer	Eastern Hancock Elementary P.T.O.	Dr. and Mrs. Dustin J. Eck
Gene and Madonna Addison	Mr. and Mrs. Jim Arthur	Ms. Elizabeth Betz	Ms. Lucilla H. Boyd	Mr. and Mrs. Kevin Burke	Ms. Marilyn R. Chappell	Nick and Nicole Dellen	Edelweiss Equine Assisted Therapy Center, Inc.	Mr. and Mrs. Jeffery M. Emminger
Mr. and Mrs. Jeff D. Addison	Ms. Relina Arthur	Ms. Teresa Bever	Mr. Robert E. Boyer CPA	Mr. and Mrs. Leo Burkhardt	Charlottesville High School Alumni	Demidaco	Edelweiss Equine Assisted Therapy Center, Inc.	Mr. and Mrs. Kyle Englekling
Mr. and Mrs. Wayne B. Addison	Mr. and Mrs. Ruth O. Arthur	Mr. and Mrs. Roger Beyers	Mr. and Mrs. Donald F. Burnham	Mr. and Mrs. Sandy Burton	Charlottesville Lions Club	Ms. Claire DeVoe	Edelweiss Equine Assisted Therapy Center, Inc.	Mr. and Mrs. Dane Erlewein
Brian and Arlene Adkins	Mr. and Mrs. Terry Atkins	BFS Group-Central, LLC	Ms. Joyce Burnham	Ms. Heather Bush	Mr. and Mrs. James E. Cherry	Mr. and Mrs. Gregory DeWitt	Edelweiss Equine Assisted Therapy Center, Inc.	Mr. and Mrs. Don Erwin
AgriInstitute	Mr. Neil Atwell	Brandywine Community Church	Mr. and Mrs. Michael Burrow	Ms. Ronda Brandom	Mr. and Mrs. Jeffrey Cherry	Mr. and Mrs. Nancy Dezelan	Edelweiss Equine Assisted Therapy Center, Inc.	Mr. and Mrs. Jim Erwin
Mr. and Mrs. Thomas E. Ailes	Mr. and Mrs. DeWitt E. Auer	Brandywine Dental Group, PC	Bob and Mary Lynn Burrows	Brandywine Community Church	Mr. and Mrs. Charles D. Cochard	Mr. and Mrs. Douglas Dible	Edelweiss Equine Assisted Therapy Center, Inc.	Ms. Karen Escue
Ms. Barb Alder	Joyce and Mary Kay Taylor	Brandywine Elementary School	Mr. and Mrs. Stephen F. Burt	Brandywine Community Church	Chicago's Pizza	Mr. and Mrs. Luke Edwards	Edelweiss Equine Assisted Therapy Center, Inc.	Ms. Amy R. Ebbing
Mr. and Mrs. Lawson Alexander	Aylsworth	Brandywine Township Ext.	Mr. and Mrs. Burt CL and Sandy Burton	Brandywine Community Church	Christ Fellowship Church	Rick P. and Susan J. Edwards	Edelweiss Equine Assisted Therapy Center, Inc.	Ms. Amy R. Ebbing
Sandy Alexander	Ms. Linda W. Baird	Brandywine Township Ext.	Ms. Heather Bush	Brandywine Community Church	Mr. Bobby Christian	Ms. Amy R. Ebbing	Edelweiss Equine Assisted Therapy Center, Inc.	Ms. Amy R. Ebbing
Mr. and Mrs. Donald E. Allemeier	Ms. Patsy Baker	Brandywine Township Ext.	Ms. Ronda Brandom	Brandywine Community Church	Mr. and Mrs. Harold L. Crock	Ms. Amy R. Ebbing	Edelweiss Equine Assisted Therapy Center, Inc.	Ms. Amy R. Ebbing
Mr. John Allemeier	Mr. and Mrs. Terry Balko	Brandywine Township Ext.	Brandywine Community Church	Brandywine Community Church	Ms. Elissa Cronk	Ms. Amy R. Ebbing	Edelweiss Equine Assisted Therapy Center, Inc.	Ms. Amy R. Ebbing
Phil Allemeier Family	Mr. Vic Bardonner	Brandywine Township Ext.	Brandywine Community Church	Brandywine Community Church	Crop Production Services	Ms. Amy R. Ebbing	Edelweiss Equine Assisted Therapy Center, Inc.	Ms. Amy R. Ebbing
Allen Wellman McNew Harvey, LLP	Mr. Donnie Barnes	Brandywine Township Ext.	Brandywine Community Church	Brandywine Community Church	Cross of Grace Lutheran Church	Ms. Amy R. Ebbing	Edelweiss Equine Assisted Therapy Center, Inc.	Ms. Amy R. Ebbing
Mr. and Mrs. Eric N. Allen	Mr. and Mrs. John Barnett	Brandywine Township Ext.	Brandywine Community Church	Brandywine Community Church	Ms. Missy Cross and Mr. Sam Griner	Ms. Amy R. Ebbing	Edelweiss Equine Assisted Therapy Center, Inc.	Ms. Amy R. Ebbing
Mike Allen	Mr. and Mrs. Michael L. Barnhart	Brandywine Township Ext.	Brandywine Community Church	Brandywine Community Church	Mr. and Mrs. Richard A. Cross	Ms. Amy R. Ebbing	Edelweiss Equine Assisted Therapy Center, Inc.	Ms. Amy R. Ebbing
Mr. and Mrs. Robert W. Allen	Doug Baron	Brandywine Township Ext.	Brandywine Community Church	Brandywine Community Church	Mr. Justin Crowder	Ms. Amy R. Ebbing	Edelweiss Equine Assisted Therapy Center, Inc.	Ms. Amy R. Ebbing
Mr. and Mrs. Jeff Allender	Christopher and Lindsay Barr	Brandywine Township Ext.	Brandywine Community Church	Brandywine Community Church	Mr. Bruce Culbreth	Ms. Amy R. Ebbing	Edelweiss Equine Assisted Therapy Center, Inc.	Ms. Amy R. Ebbing
Alpha Delta Kappa	Mr. and Mrs. Stuart Barr	Brandywine Township Ext.	Brandywine Community Church	Brandywine Community Church	Ms. Denise Byers	Ms. Amy R. Ebbing	Edelweiss Equine Assisted Therapy Center, Inc.	Ms. Amy R. Ebbing
American Legion Auxiliary Unit 182	Mr. and Mrs. Scott A. Barton	Brandywine Township Ext.	Brandywine Community Church	Brandywine Community Church	Mr. and Mrs. Gilbert E. Byers	Ms. Amy R. Ebbing	Edelweiss Equine Assisted Therapy Center, Inc.	Ms. Amy R. Ebbing
Amity United Methodist Church	Mr. Todd Barton	Brandywine Township Ext.	Brandywine Community Church	Brandywine Community Church	Mr. and Mrs. Joe D. Byers	Ms. Amy R. Ebbing	Edelweiss Equine Assisted Therapy Center, Inc.	Ms. Amy R. Ebbing
Anders Insurance Agency	Mr. Roger W. Basl	Brandywine Township Ext.	Brandywine Community Church	Brandywine Community Church	Mr. and Mrs. Chris Cain	Ms. Amy R. Ebbing	Edelweiss Equine Assisted Therapy Center, Inc.	Ms. Amy R. Ebbing
Ms. Cathy Anderson	Chris Bates	Brandywine Township Ext.	Brandywine Community Church	Brandywine Community Church	Ms. Sally S. Cain	Ms. Amy R. Ebbing	Edelweiss Equine Assisted Therapy Center, Inc.	Ms. Amy R. Ebbing
Mr. Eric Anderson	Mr. and Mrs. Tommy L. Batt	Brandywine Township Ext.	Brandywine Community Church	Brandywine Community Church	Mr. and Mrs. Bernie Campbell	Ms. Amy R. Ebbing	Edelweiss Equine Assisted Therapy Center, Inc.	Ms. Amy R. Ebbing
Ms. Lucinda Anderson	Ms. Kara N. Batton	Brandywine Township Ext.	Brandywine Community Church	Brandywine Community Church	Robert and Pamela Campbell	Ms. Amy R. Ebbing	Edelweiss Equine Assisted Therapy Center, Inc.	Ms. Amy R. Ebbing
Ms. Jane Ankrum	Mr. and Mrs. William L. Batton	Brandywine Township Ext.	Brandywine Community Church	Brandywine Community Church	Cargill INC	Ms. Amy R. Ebbing	Edelweiss Equine Assisted Therapy Center, Inc.	Ms. Amy R. Ebbing
Anonymous (multiple)	BBQ N' Fools Catering, LLC	Brandywine Township Ext.	Brandywine Community Church	Brandywine Community Church	Ms. Pam Carlton	Ms. Amy R. Ebbing	Edelweiss Equine Assisted Therapy Center, Inc.	Ms. Amy R. Ebbing
Anytime Fitness	Mr. and Mrs. Thomas C. Beagle	Brandywine Township Ext.	Brandywine Community Church	Brandywine Community Church	Ms. Sally Carlton	Ms. Amy R. Ebbing	Edelweiss Equine Assisted Therapy Center, Inc.	Ms. Amy R. Ebbing
Doug and Brenda Apple	Mr. and Mrs. Burl Bearhope	Brandywine Township Ext.	Brandywine Community Church	Brandywine Community Church	Ms. Burl and Georgia Carmichael	Ms. Amy R. Ebbing	Edelweiss Equine Assisted Therapy Center, Inc.	Ms. Amy R. Ebbing
Mr. and Mrs. John A. Apple	Ms. Julie K. Beauchat	Brandywine Township Ext.	Brandywine Community Church	Brandywine Community Church	Mr. and Mrs. Kevin K. Brown	Ms. Amy R. Ebbing	Edelweiss Equine Assisted Therapy Center, Inc.	Ms. Amy R. Ebbing
Mrs. Lois Apple	Mr. and Mrs. William H. Booth	Brandywine Township Ext.	Brandywine Community Church	Brandywine Community Church	David and Leanne Brown	Ms. Amy R. Ebbing	Edelweiss Equine Assisted Therapy Center, Inc.	Ms. Amy R. Ebbing
Mr. and Mrs. Fred P. Applegate	Mr. and Mrs. Wayne C. Beck	Brandywine Township Ext.	Brandywine Community Church	Brandywine Community Church	Ms. Lisa Brown	Ms. Amy R. Ebbing	Edelweiss Equine Assisted Therapy Center, Inc.	Ms. Amy R. Ebbing
Mr. Anthony Aquilina	Ms. Vernetta Beesley	Brandywine Township Ext.	Brandywine Community Church	Brandywine Community Church	Mr. and Mrs. Michael A. Brown	Ms. Amy R. Ebbing	Edelweiss Equine Assisted Therapy Center, Inc.	Ms. Amy R. Ebbing
	Ms. Karen Beeson and Mr. Emmanuel Rosado	Brandywine Township Ext.	Brandywine Community Church	Brandywine Community Church	Ms. Michelle Brown	Ms. Amy R. Ebbing	Edelweiss Equine Assisted Therapy Center, Inc.	Ms. Amy R. Ebbing
	Mr. and Mrs. Jerry Bell	Brandywine Township Ext.	Brandywine Community Church	Brandywine Community Church	Mr. Scott Brown	Ms. Amy R. Ebbing	Edelweiss Equine Assisted Therapy Center, Inc.	Ms. Amy R. Ebbing
		Brandywine Township Ext.	Brandywine Community Church	Brandywine Community Church	Ms. Virginia Brown	Ms. Amy R. Ebbing	Edelweiss Equine Assisted Therapy Center, Inc.	Ms. Amy R. Ebbing
		Brandywine Township Ext.	Brandywine Community Church	Brandywine Community Church	Estate of Mrs. June M. Brune	Ms. Amy R. Ebbing	Edelweiss Equine Assisted Therapy Center, Inc.	Ms. Amy R. Ebbing

The Community Foundation Board of Directors



Bob Bogigian
Chair
Center



Josh Daugherty
Vice-Chair
Sugar Creek



Linda Muegge
Treasurer
Blue River



Jan Viehweg
Secretary
Buck Creek



Susan Bennett
Center



Barbara Campbell
Buck Creek



Tim Clark
Center



Gary Edwards
Buck Creek



Lorraine Ewing
Vernon



Ryan Hammons
Center



Kevin Harvey
Sugar Creek



Miles Hercamp
Sugar Creek



Kellie Johnson
Vernon



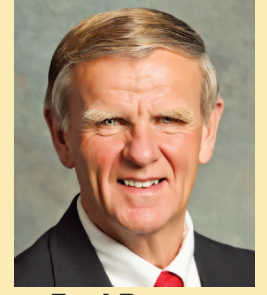
Florence May
Vernon



P. Jon Miller
Center



Sandra H. Miller
Center



Fred Powers
Brandywine



Ariel Schoen
Vernon



Adam Schultz
Center



Terry Tillett
Center



Dr. Lori Wean
Center



Bill Weldon
Green



**Stephanie
White-Longworth**
Jackson

The Community Foundation Staff



Mary Gibble
President



Amanda Evans
Marketing
Coordinator



Marie Felver, CPA
Finance Officer



Kara Harrison
Community
Investment &
Grants Officer



Amber Sermersheim
Advancement
Officer

Give Where You Live, Grow Where You Live

The Hancock County Community Foundation was created by and for the people in our local area. Its core purpose is to help you help others.



People of modest means stand side by side with those of great wealth to form a community philanthropic foundation that is strong and deep beyond measure. Anyone can be a philanthropist! The Community Foundation provides numerous giving options, all of which make an impact, no matter the size of gift!

Hancock County Community Foundation

312 E. Main Street, Greenfield, Indiana 46140 • 317.462.8870

giveHCgrowHC.org

2015 Annual Report Sponsored by:



Report Contributors — Writing/Project Management: Mary Gibble | Graphic Design: Susanna Combs Graphic Design
Professional Photography: Jessica Green & Bello Romance Photography



A Gift from
Our Community to the
Children of Hancock County

The Gift of Literacy... Donate to the Imagination Library Fund

Enrollment began with resident children born on or after January 1, 2016. Children enrolled from birth to age 5 will receive 60 books by their first day of kindergarten. Enrollment forms can be found in library locations, schools, churches, nonprofits, and health facilities. Forms must be delivered or mailed to the **Hancock County Public Library at 900 W. McKenzie Rd. Greenfield, IN 46140.**

Make checks payable to the HCCF-IL Fund

Hancock County Community Foundation | 312 E. Main St., Greenfield, IN 46140 | 317.462.8870

Donate online at giveHCgrowHC.org