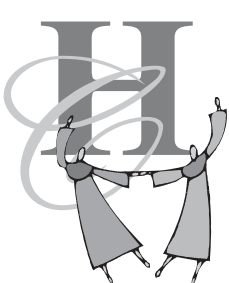




HANCOCK COUNTY COMMUNITY FOUNDATION



2004 ANNUAL REPORT



# Celebrating **PHILANTHROPY**





# A SPECIAL THANK YOU...



*On behalf of the Board of Directors and staff*, I am honored to present Hancock County Community Foundation's 2004 Annual Report.

The following pages will highlight the Community Foundation's accomplishments, activities, and programs. All have one thing in common, the amazing presence of the philanthropic spirit, a spirit that is the basis for all that the Community Foundation is about and has become.

Philanthropy is defined as voluntary action for the public good. This voluntary action is realized through the gifts we give of our treasure, time, and/or talent.

As Chairman of the Board, my passion for the Community Foundation is founded in the very idea that the Community Foundation is all about harnessing the philanthropic spirit of our donors, volunteers, and community leaders for the single purpose of making our community a better place to live. It is my hope that after reading through this annual report, you will begin to share with me my passion for not only this idea, but also the belief that the Community Foundation's primary purpose for existing is to foster the growth of the philanthropic spirit in each of us.

I would like to extend a special thank you to the many donors, nonprofit organizations, and community members who have played a part in the Community Foundation's ability to make a difference in our community.

I encourage you to read through this annual report and share the philanthropic spirit with the board and staff.



*Karen Tarver*

Sincerely,

*Karen Tarver*

Karen Tarver  
Chairman

# CULTIVATING & CELEBRATING A BOUNTIFUL HARVEST OF PHILANTHROPY



*The Board* of Directors and staff would like to extend a special thank you to everyone who played a part in making this celebration of philanthropy a special evening.

The Annual Dinner brought together the community in celebrating the philanthropic spirit which has helped the Community Foundation achieve so many things. Without the philanthropic spirit of donors, Board members, community leaders, Hancock County nonprofits, and volunteers, the Foundation would not have been able to accomplish any of the following:

- since its inception, the Foundation has been able to provide grant dollars for programs ranging from environmental revitalization to the creation of programs for special needs children;
- each of the last five years, it has been able to provide a record number of scholarships; and,
- it has been able to grow its endowment assets from \$6 million in 1998 to \$11 million by the end of 2004.

As a part of the celebration of the philanthropic spirit, HCCF announced and honored recipients of the 2004 Martha Beckenholdt Youth Philanthropy Award and 2004 Emeritus Leadership Award. *Both are highlighted in this newsletter.*

In addition, persons attending were honored with a performance from the Arc of Hancock County Dream Makers. The Dream Makers performed W.A.R.C. Variety Hour, an excerpt from their most recent play *Life and Times of FDR*. The performance was not only well done, it was also a very moving experience. Based on feedback from those in attendance, many thanks to the Arc and Dream Makers for their dedication and talent.

As a final part of the celebration, the Community Foundation asked Hancock County nonprofits to participate in the An-



nual Dinner by providing a themed gift basket which represented their agency's mission and programs. Nineteen nonprofit organizations participated with some wonderfully creative gift baskets. The gift baskets were auctioned off during the evening, raising more than \$1,700. The dollars raised are being used to provide unre-

stricted grant dollars back into the community. A special thank you to the companies and community groups that helped

make this evening possible. The corporate sponsors were National Bank of Indianapolis, Hancock Telecom, Pritzke & Davis, and Smith Implements. In addition, a special thank you goes to the Eastern Hancock FFA for helping with serving food and drinks during the evening.

Again, thank you to everyone who was a part of this special evening. It is a great feeling to know that so many individuals, companies, and nonprofit organizations care so much about this community.



stricted grant dollars back into the community.

A special thank you to the companies and community groups that helped



# RECOGNITIONS

## EMERITUS LEADERSHIP AWARD

*The Hancock County* Community Foundation Emeritus Board is pleased to announce the Hancock County Adult Literacy Coalition (HCALC) as the winner of the 2004 Emeritus Leadership Award.

In 2001, the Hancock County Community Foundation Board of Directors established the Hancock County Community Foundation Emeritus Board. The Emeritus Board recognizes and continues to engage those past Board members who completed at least one full three-year term as a Board member. The Emeritus Leadership Award is intended to celebrate and reward a Hancock County nonprofit organization that has displayed outstanding community leadership in addressing the needs of its constituencies.

Organized in 1988, the Hancock County Adult Literacy Coalition's mission is to address the problems of adult illiteracy in Hancock County. The group was formed through the efforts of local literacy volunteers, concerned community and business leaders, and the Greenfield Learning Center.

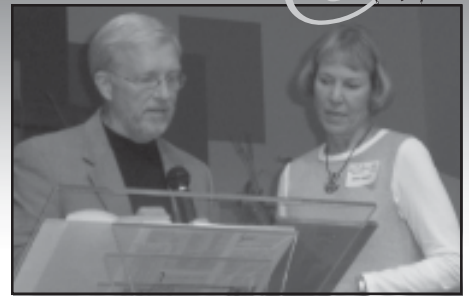
Since 1988, 114 volunteers have been trained and worked with one or more individual students. The instructors have been able to integrate the tutored students into the regular Adult Basic Education program as their skills improved.

Several partnerships have been created in the community including: Alliance for Community Education to increase literacy services to students learning English as a second language, the Healthy Families program to provide literacy services and child care to at-risk families, the Division of Family and Children to assist welfare recipients to improve their literacy skills for job readiness, and the Hancock County Probation and Work Release programs to provide literacy services to their clients.

The student recruitment effort by the HCALC has been outstanding and now classes at the Greenfield Learning Center

often have waiting lists to enroll. More than 200 students enroll annually with more than 50 G.E.D. graduates being recognized at graduation ceremonies conducted by HCALC.

HCALC recognizes that Hancock County residents need to be functional in all basic skills which include reading, math, language arts, and the spoken English language. It is finding its most urgent priority is to expand its volunteer training program to provide tutors who are trained



Ron Pritzke presents the Emeritus Leadership award to Hancock County Adult Literacy Coalition representative, Susan Leonard.

to assist learners who need individual attention in one or more of these areas.

## MARTHA BECKENHOLDT YOUTH PHILANTHROPY AWARD

*The Martha Beckenholdt* Youth Philanthropy award was established by the Hancock County Community Foundation in 1996. This award is given annually to a junior, from one of the four Hancock County high schools, who exhibits outstanding contributions of time, talent, and energy to philanthropic endeavors. A monetary gift, in the recipient's name, is donated by the Foundation to a charity of the student's choice.

Bobby Jack Wade, III was selected as the 2004 Martha Beckenholdt Youth Philanthropy Award recipient. Bobby, a student at Greenfield-Central High School, is the son of Bobby and Chris Wade of Greenfield.

Bobby Jack chose the Hancock Hope House as the charity for the award's donation. He credits his older sister Caroline, an earlier recipient of the Beckenholdt Award, with instilling his early interest in Hope House as he accompanied her to her Girl Scout community service projects. He, in turn, encouraged his friends and mother to accompany him as he volunteered as part of the Kiwanis Builder's Club. The selection committee was impressed by his encompassing devotion. Bobby Jack plans to study psychology and counsel others in the future.



Legan and Bobby Jack Wade, III.

## OUR SINCERE APPRECIATION

*Nancy Reason*, the Hancock County Community Foundation's only Program Officer tendered her resignation in May of 2004. Nancy served the Foundation well in her more than five years of service. She was actively engaged in all aspects of our granting procedures, and she was instrumental in the Foundation's implementation of the Lilly Community Scholars program. Best wishes are extended to Nancy as she enjoys the next phase of her life—and her grandchildren!

# GRANTS AT WORK

## AMBASSADOR FUND GRANTS

*The following grants* were funded through a portion of the earnings from an unrestricted endowment, the Ambassador Fund. Like all gifts to the Foundation, a gift to the Ambassador Fund is invested forever. But, instead of directing the grant to a specific organization or cause, an unrestricted endowment has the flexibility to address a variety of community concerns. The HCCF Board of Directors selects the annual grantees after a rigorous selection process. This way, new or ongoing needs are able to receive the monetary support that is necessary to serve the community. Unrestricted endowment funds allow for current and creative initiatives to be funded forever.

### HANCOCK COUNTY SENIOR SERVICES, INC.

The Hancock County Senior Services, Inc. received a grant to help provide for public transportation in Hancock County. This grant provides matching funds toward a handicap accessible vehicle for that purpose.

### HANCOCK COUNTY OUT-OF-SCHOOL SUSPENSION (OSS) DAY REPORTING PROGRAM

The Out-of-School Suspension (OSS) provides space, instructors, and assistance to students who have been expelled or suspended from school. The purpose of this grant is to provide the financial resources needed to help expand the current OSS Program into the fourth and fifth grades.

### EDELWEISS EQUINE-ASSISTED THERAPY CENTER, INC.

The Therapy Center is a new initiative to Hancock County serving children and adults who are mentally, physically, socially, behaviorally, and/or emotionally challenged through a riding therapy program. This award provides for the preparation and completion of driveway construction for a roadway from the barn entrance and parking lot.

### THE VILLAGES OF INDIANA, INC./HEALTHY FAMILIES

Almost 200 new parents will be provided with gift bags as part of Healthy Families' effort to meet and assess all new parents in the county. This grant will fully cover the cost of providing the gift bags which contain resource information and other items helpful to new families.

### HANCOCK COUNTY VISITORS' BUREAU

This grant helps fulfill the match requirement of the Community Development Block Grant/Community Focus Fund that the HCVB has applied for to help renovate the former downtown Village Theatre.

### ALTERNATIVES, INCORPORATED OF MADISON COUNTY

Hancock County residents who need emergency shelter due to domestic violence have access to the Madison County facility. This grant provides financial resources towards the construction of a new domestic violence shelter in Madison County.

### LUTHERAN SOCIAL SERVICES OF MID-AMERICA

Those living at Good Shepherd/Peace Manors in Greenfield will benefit from this grant that provides for the construction of a covered, outdoor patio area. The 81 residents will have a gathering area for their social activities.

### HANCOCK COUNTY HUMANE SOCIETY

Technology is always an issue for non-profit organizations. With this grant, the Humane Society will be able to purchase needed equipment, software, and supplies to help it process animal adoptions and perform office functions more efficiently.

### EDELWEISS EQUINE-ASSISTED THERAPY CENTER, INC.

The grant money was used to help feed the horses through the winter so they will be ready for the children and adults to ride

in the spring. Edelweiss promotes freedom and happiness to challenged persons through the use of a horse.

### FAMILIES UNITED FOR SUPPORT AND ENCOURAGEMENT (FUSE)

FUSE received money to buy display racks and brochures. These items will allow the group to attend events and have their brochure on display to increase disability awareness in the community and provide basic educational support to families about specific disabilities.

### HANCOCK COUNTY ADULT LITERACY

Hancock County Adult Literacy used their grant dollars to purchase new training materials. Ten to fifteen tutors will be trained annually to work with twenty to thirty adult students.

### HANCOCK COUNTY FOOD PANTRY

Hancock County Food Pantry bought a printer/scanner/fax machine with the grant money they received. This equipment will help them store records, make reports, and order food more easily to help the approximately 200 households they serve every 30 days.

### HANCOCK COUNTY HOPE HOUSE

This grant money will help fund the "Life Leads" program at Hope House. Providing instruction and guidance needed to overcome total dependence on social programs, Hope House hopes to have people who leave the House be self-sufficient within six months.

### HANCOCK COUNTY OUT-OF-SCHOOL SUSPENSION

This grant money will partially fund the community service part of their program. The community service offers many opportunities for one-on-one mentoring and informal rehabilitation.

### HARRIS ELEMENTARY SCHOOL

Harris Elementary currently has first graders reading at kindergarten level through third grade level. This grant will





allow a guided reading level library to be purchased to use as a supplement to the regular school textbooks.

### **MEALS ON WHEELS**

Grant money will be used to replace worn out oven bags used to get hot food to their clients. They also will be replacing a computer to keep their records up-to-date.



### **PARTNERS FOR ANIMAL WELFARE SOCIETY (PAWS)**

PAWS has a volunteer who goes to elementary schools in Hancock County and uses the KIND newsletter to supplement

the elementary curriculum. The grant will partially fund the buying of those newsletters. Teachers noted the value of providing students support reading supplies in a tightening school budget environment.

## **AGENCY ENDOWMENT FUNDS**

Within the Hancock County Community Foundation, a nonprofit agency or organization can create an endowment fund from which it will receive annual income. This income is usually used to help cover the agency's operating costs. The following Hancock County organizations have received distributions as a benefit from their established endowment fund:

- ARC OF HANCOCK COUNTY, INC.**
- BOYS AND GIRLS CLUB OF HANCOCK COUNTY**
- BRADLEY UNITED METHODIST CHURCH**
- FORTVILLE-VERNON TOWNSHIP PUBLIC LIBRARY**
- GREENFIELD REVITALIZATION, INC. MAINTENANCE**
- HANCOCK MEMORIAL HOSPITAL FOUNDATION LEGACY**
- SET A GOOD EXAMPLE FOUNDATION, INC.**

## **DESIGNATED ENDOWMENT FUNDS**

A specific charity or organization is named in the endowment fund agreement to perpetually receive grants from a designated endowment fund. The donor then knows that the charity that is important to him or her will have a grant coming to it annually.

The following endowment funds have designated or named the listed organization to receive the distribution that has been awarded:

**JOHN C. BEESON  
HUMANITARIAN  
ENDOWMENT FUND**  
Hancock Hope House

**BROOKVILLE  
MARRIAGE  
ENDOWMENT FUND**  
Brookville Road Church

**JOHN C. BEESON  
HUMANITARIAN  
ENDOWMENT FUND**  
Arc of Hancock County

**BERT AND IRENE CURRY  
CHARITABLE ENDOWMENT**  
Fulton Fairview Cemetery Association

*Designated Endowment Funds continued*

**BERT AND IRENE CURRY  
CHARITABLE ENDOWMENT**  
Pleasanton Cemetery Endowment Assn.

**ROBERT H. GLENN  
ENDOWMENT FUND**  
Greenfield Church of Christ

**JOHN H. GLICK  
ROTARY ENDOWMENT FUND**  
Napoleon (OH) Rotary Club

**GEORGE H. KLEIMAN, SR.  
AND HILDA E. KLEIMAN  
ENDOWMENT FUND**  
St. Jude's Children's Research Hospital

**GEORGE H. KLEIMAN, SR.  
AND HILDA E. KLEIMAN  
ENDOWMENT FUND**  
Zion Lutheran Church

**GEORGE H. KLEIMAN, SR.  
AND HILDA E. KLEIMAN  
ENDOWMENT FUND**  
Zion Lutheran Cemetery

**KEITH AND JOANNE  
MCCLARNON REGREENING  
ENDOWMENT FUND**  
Regreening Greenfield

**ROTARY CLUB OF  
GREENFIELD EDUCATION  
ENDOWMENT FUND**  
Rotary Club of Greenfield scholarships

*Designated Endowment Funds continued*

**GREENFIELD ROTARY SCHOLARSHIP ENDOWMENT FUND**

Rotary Club of Greenfield scholarships

**CHRIS SULLIVAN MEMORIAL MUSIC BOOSTER SCHOLARSHIP ENDOWMENT FUND**

Mt. Vernon Music Boosters

**EDITH ZIKE MEMORIAL NURSING SCHOLARSHIP ENDOWMENT FUND**

Hancock Memorial Hospital Foundation

**OPERATING ENDOWMENT FUNDS**

The Hancock County Community Foundation receives assistance with its ongoing operating costs from annual distributions awarded by the following endowment funds:

**IRENE AND BERT CURRY OPERATING ENDOWMENT FUND**

**CHARLES AND MARIANNE PASCO MEMORIAL ENDOWMENT FUND**

**HANCOCK COUNTY COMMUNITY FOUNDATION**

**FIELD OF INTEREST ENDOWMENT FUNDS**

Some donors have an interest in a particular area or field, the arts or the environment, for example. No specific organization will benefit, but any nonprofit organization in the field is eligible to receive a grant from this endowment fund that will be given annually. Hancock County has been served by grants from the following field of interest endowment funds:

**ADDICTIONS AND SUBSTANCE ABUSE EDUCATION ENDOWMENT FUND**

Family Service

**ROBERT AND VERA MAXWELL ENDOWMENT FUND**

Home Health Care and Hospice of Hancock Memorial Hospital and Health Services

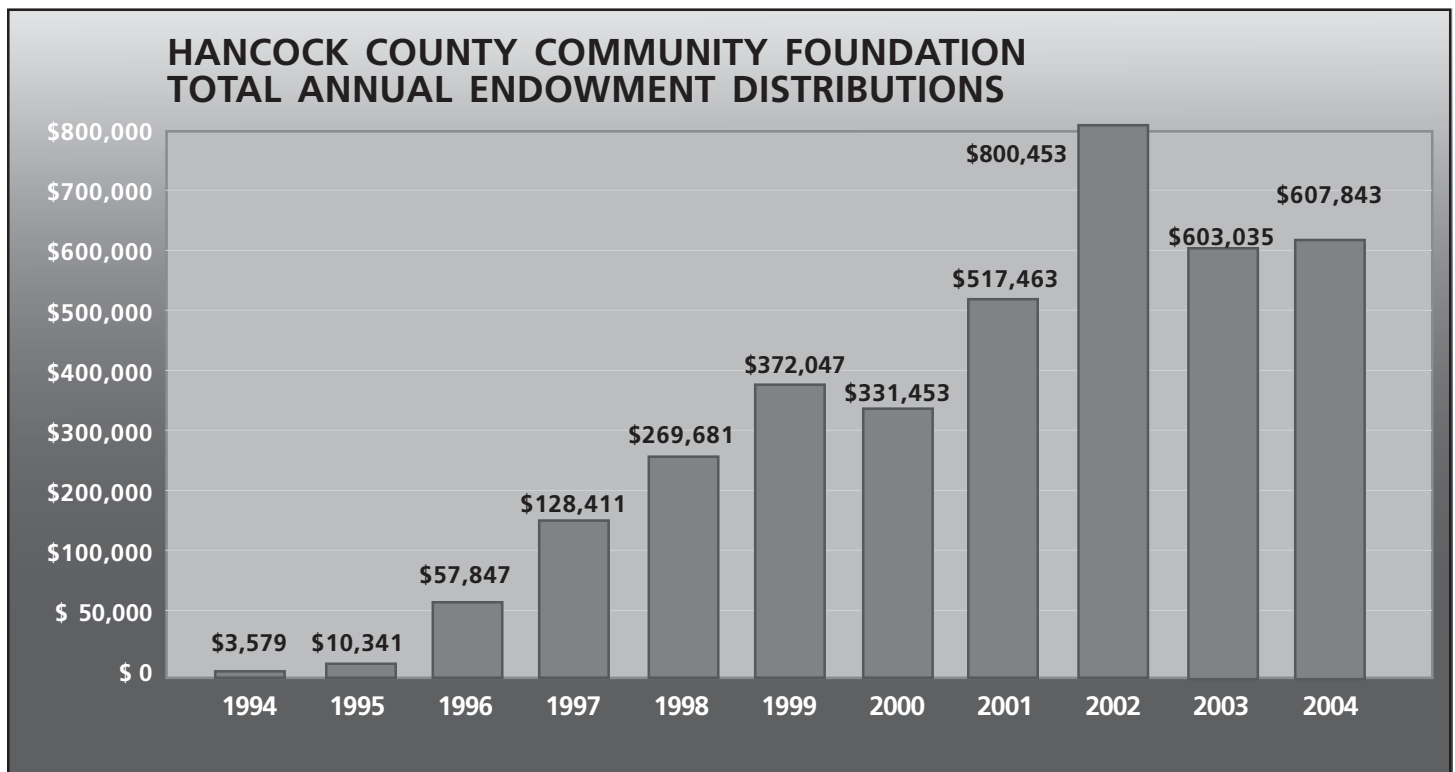
**OPERATING ENDOWMENT FUND UNRESTRICTED FUNDS**

An unrestricted fund allows grants to be made each year that address current community needs. The Hancock County Community Foundation will invite, receive, and assess grant applications and then determine the actual grant recipients. Each year, new grants will be given to those organizations that serve the county in various ways. The two named, unrestricted endowment funds that are held by the Foundation are listed below:

**REINHARD L. AND MARLISE BUBENZER COMMUNITY DEVELOPMENT ENDOWMENT FUND**

**DR. AND MRS. CHARLES E. JORDAN COMMUNITY DEVELOPMENT ENDOWMENT FUND**

The Visiting Artist Program held at all of Greenfield-Central Community School Corporation's elementary schools and one of its middle schools was funded with both of these unrestricted endowment funds. All students had the opportunity to see professional artists demonstrate their skills.





# 2004 SCHOLARSHIPS

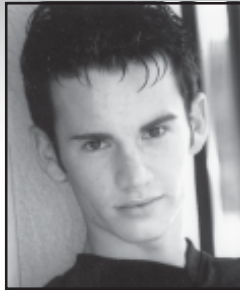
## LILLY SCHOLARSHIP

*The Hancock* County Community Foundation is pleased to again have three outstanding Lilly Endowment Community Scholarship recipients for 2004. They are Tony Howell from Mt. Vernon High School; Dawn Perry from New Palestine High School; and, Sarah Summers from Greenfield-Central High School.

Tony Howell, a graduate of Mt. Vernon High School, is the son of Brenda Howell and the late John Howell. Tony plans to attend Ball State University and enter the performing arts. "I want to go beyond creating theatre for entertainment; I want to actively produce art. I believe art to be integral to humanity. It holds the power to provoke thought, provide escape, and elevate reality." His volunteer involvement has included Hancock County Senior Services, Indiana Thespian Society, Big Brothers, and Theatre on the Square.

Dawn Perry, a graduate of New Palestine High School, is the daughter of Bernie and Cathy Perry. Dawn plans to attend St. Joseph's College and study elementary education. "Excitedly, I await my opportunity to inspire children and teach them about life." Dawn's volunteer involvement has included Girl Scouts care for disabled children, Girl Talk Club, Gift of Sight program, and Holy Spirit Church.

Sarah Summers, a graduate of Greenfield-Central High School, is the daughter of Michael and Sheila Summers. Sarah plans to attend DePauw University and study journalism. "I hope to serve and



Tony Howell



Dawn Perry



Sarah Summers

impact my world by means of the media. The media is a powerful tool, and I want to use it to educate and inform people."

Sarah's volunteer involvement has included Leaders to Go, Alternatives Inc., Youth as Resources, and Neighborhoods Against Substance Abuse.

The Lilly Endowment Community Scholarship Program helps raise the level of educational attainment in Indiana and further gives Indiana's community foundations the ability to enhance the quality of life of the state's residents. This full-tuition scholarship is for four years of full-time undergraduate study leading to a baccalaureate degree at any Indiana public or private college or university accredited by the North Central Association of Colleges and Schools.

We congratulate our 2004 Lilly Scholarship winners!

## PERFORMING ARTS SCHOLARSHIP

*George and Icy Vaughn* had a desire to share their appreciation of the performing arts, so they established a scholarship fund to recognize the talented youth of Hancock County. Each high school in the county received applications and selected up to four seniors to audition for the GEORGE AND ICY VAUGHN PERFORMING ARTS COMPETITION. This year students participated in the areas of dance, instrumental music, and vocal music. The winners, selected by a panel of outside experts, were: Alison Copeland (piano-MVHS), Susan MacAleese (piano-MVHS), Tony Howell (vocal-MVHS), and Brandon Perry (vocal-NPHS). Each received a \$1,000 scholarship.

*Each year* more students are the beneficiaries of a generous community concerned about the educational welfare of its youth. Seventy-four scholarships totaling more than \$300,000 were awarded in 2004. Because our donors have established many different scholarship funds for the purpose of furthering the education of graduates of a particular high school, students in a special field of study, or those enrolled at a chosen institution, each one is unique in its purpose and intent. The diversity of our scholarships allows the Foundation to help many traditional and nontraditional students.

The Foundation's scholarship funds offer students increased access to higher education and have the power to change students' lives. The following is a list of individuals who were awarded scholarships in 2004.

**ADULT RE-EDUCATION SCHOLARSHIP**  
Leslie J. Wildauer

**JIM ANDREWS SCHOLARSHIP**  
Abbey Freeman, Eastern Hancock H.S.

**MARY ASH SCOTT BARDONNER BARDES SCHOLARSHIP**  
Kayte Russell, New Palestine H.S.

**BECKENHOLDT FAMILY SCHOLARSHIP**  
Jenna Brooke Schultert, Cowan H.S.

**EARL J. AND IRENE B. BROOKS SCHOLARSHIP**  
James Schmidt, Lara Schilling, New Palestine H.S.; Jessica Jarvis, Katherine Davis, Eastern Hancock H.S.; Joy Clark, Derek Hammel, Mt. Vernon H.S.; Kimberly Coe, Jessica Tennant, Greenfield-Central H.S.

**RICHARD H. CROSSER MEMORIAL SCHOLARSHIP**  
Alex Erwin, Greenfield-Central H.S.; Natalie Webber, Mt. Vernon H.S.

**CARLINE DAY SCHOLARSHIP**  
Kelsey Emsweller, New Palestine H.S.

**DONNA DUZAN NURSING SCHOLARSHIP**  
Martha Danielle Sanders, Greenfield-Central H.S.

**MATTHEW A. FOLKENING MEMORIAL SCHOLARSHIP**  
Ryan Poffenberger, Stephen Randall Mathews, New Palestine H.S.

**HANCOCK COUNTY COMMUNITY FOUNDATION SCHOLARSHIP**

Olivia Kellner, New Palestine H.S.; Laura Thurston, Courtney Wales, Eastern Hancock H.S.; Lauren Vail, Greenfield-Central H.S.; Natalie Webber, Mt. Vernon H.S.

**HANCOCK COUNTY SHRINE CLUB SCHOLARSHIP**

Lindsey Query, Greenfield-Central H.S.; Brian Jennings, New Palestine H.S.

**MERVIN K. HOLZHAUSEN MEMORIAL SCHOLARSHIP**

Kelsey Emsweller, New Palestine H.S.

**MIKE JOHNSON MEMORIAL SCHOLARSHIP**

Zachary Fontaine, Mt. Vernon H.S.

**JUDY AND HOWARD JONES SCHOLARSHIP**

Kent Raymond, New Palestine H.S.

**DR. MICHAEL G. KAPP AND SUSAN J. DEATLEY-KAPP SCHOLARSHIP**

Richa Sharma, Warren Central H.S.

**DR. BRIAN AND CHARLOTTE KIRKWOOD SCHOLARSHIP**

Jessica Tennant, Greenfield-Central H.S.

**ROBERT B. EAGLESTON SCHOLARSHIP IN BUSINESS**

Natalie Webber, Mt. Vernon H.S.

**DR. WM. J. GRIFFING SCHOLARSHIP IN SCIENCE**

Lindsey Query, Greenfield-Central H.S.

**J. B. STEPHENS SCHOLARSHIP IN EDUCATION**

Danielle Frazier

**FLORENCE M. LACY SCHOLARSHIP**

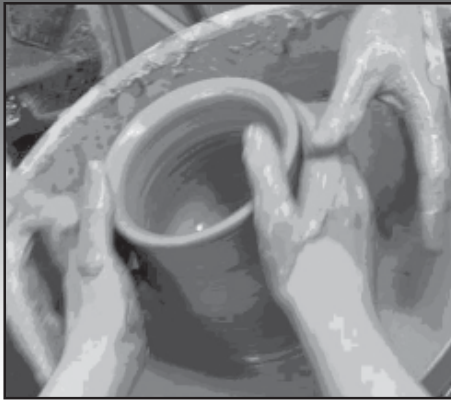
Christina D. Helms, Sara M. Cole, Greenfield-Central H.S.; Stephanie Ann Howell, John Schildmier, Eastern Hancock H.S.

**HUGH LEARY MEMORIAL SCHOLARSHIP**

Eric Baker, Greenfield-Central H.S.

**LILLY ENDOWMENT COMMUNITY SCHOLARSHIPS**

Tony Howell, Mt. Vernon H.S.; Dawn Perry,



New Palestine H.S.; Sarah Summers, Greenfield-Central H.S.

**MARK MATTICK**

**MENTAL ATTITUDE SCHOLARSHIP**

Beth Griffith, Susan Jennifer MacAleese, Mt. Vernon H.S.

**ROBERT W. AND VERA S. MAXWELL SCHOLARSHIP**

Jasmine Gosnell, Michael Lopez, Greenfield-Central H.S.

**AMY L. MCKEE-EVERETT MEMORIAL SCHOLARSHIP**

Amber Ham, Greenfield-Central H.S.

**BRUCE MCKINNEY MEMORIAL SCHOLARSHIP**

Alisha Hull, Mt. Vernon H.S.

**NANCY TERRELL MILLER SCHOLARSHIP**

Megan Phares, Mt. Vernon H.S.

**WALTER W. MITTEN FAMILY MEMORIAL SCHOLARSHIP**

James Schmidt, New Palestine H.S.

**DEBRA L. PLANK MEMORIAL SCHOLARSHIP**

Megan Phares, Mt. Vernon H.S.

**VIVA PRESSLER SCHOLARSHIP**

Allyse Wirkkala, Mt. Vernon H.S.

**DON RICKETT SCHOLARSHIP**

Daniel Wright, Greenfield-Central H.S.

**JAMES WHITCOMB RILEY FESTIVAL SCHOLARSHIP**

Aubrey Thompson, New Palestine H.S.

**GREENFIELD ROTARY SCHOLARSHIP**

Eric Williams, Tyler Adams, Greenfield-Central H.S.

**ROTARY CLUB OF GREENFIELD EDUCATION SCHOLARSHIP**

James Schmidt, New Palestine H.S.; Megan Phares, Natalie Webber, Mt. Vernon H.S.; Laura Thurston, Eastern Hancock H.S.

**GLADYS HANCOCK SHUMWAY SCHOLARSHIP**

Natalie Webber, Mt. Vernon H.S.

**JUDY D. SMITH MEMORIAL SCHOLARSHIP**

Scott Niederhaus, Mt. Vernon H.S.

**ASHLEE BROOKE SPANGLER MEMORIAL SCHOLARSHIP**  
Elisabeth Hall, New Palestine H.S.

**LEWIS AND LOUISE SPILKER MEMORIAL EDUCATION SCHOLARSHIP**  
Kelli Doerflein, Clifton Snorten, Warren Central H.S.

**CHRIS SULLIVAN MEMORIAL MUSIC BOOSTER SCHOLARSHIP**

Susan MacAleese, Brianna Muir, Adam Schreiber, Mt. Vernon H.S.

**BOB TRACY BUSINESS SCHOLARSHIP**  
Matthew D. Lee, Greenfield-Central H.S.

**GEORGE AND ICY VAUGHN PERFORMING ARTS SCHOLARSHIP**

Alison Copeland, Tony Howell, Susan MacAleese, Mt. Vernon H.S.; Brandon Perry, New Palestine H.S.

**VETERANS OF FOREIGN WARS POST 6904 SCHOLARSHIP**

Adam Paul Schreiber, Mt. Vernon H.S.

**VETERANS OF FOREIGN WARS POST 6904 PENDLETON HEIGHTS SCHOLARSHIP**

Elisa Strauch, Pendleton Heights H.S.

**ANN WAITT MEMORIAL SCHOLARSHIP**

James Benjamin Mitchell, Rose-Hulman; Megan Phares, Purdue University

**TOLBERT AND DOROTHY WARD SCHOLARSHIP**

Andrew Fetz, Greenfield-Central H.S.

**MILDRED HAWKINS WILFONG SCHOLARSHIP**

Eric Baker, Greenfield-Central H.S.

**WILFONG FAMILY SCHOLARSHIP**

Richard Welborn, Eastern Hancock H.S.

**WALTER P. AND VIRGINIA WORLAND SCHOLARSHIP**

Kyle Westfall, Greenfield-Central H.S.; Drew Moore, Mt. Vernon H.S.; Nicholas Kuhn, Eastern Hancock H.S.

**JEREMIAH AND TABBATHA ZAPP MEMORIAL SCHOLARSHIP**

Kyle Martin, Purdue University; JoLyn Holliday, Ball State University

**EDITH ZIKE MEMORIAL NURSING SCHOLARSHIP**

Jessica Herbst, Martha Danielle Sanders, Greenfield-Central H.S.; Rachel Smith, Indiana University; Amy Tillett, University of Phoenix

# 2004 NEW FUNDS

## RON HORNING SCHOLARSHIP ENDOWMENT FUND

This Fund, sponsored by the Mothers Club of the Boys and Girls Club of Hancock County, Indiana, in honor of retired Boys and Girls Club Executive Director (1989-2004), Ron Horning, was established to provide educational support to students who desire to further their education including trade school. Awards will be given to students who have volunteered at the Boys and Girls Club, school, church, or a community project or program; shown employment participation towards community development; demonstrated a willingness to take responsibility; and/or contributed time and talent toward the betterment of themselves and their community. Criteria include: a high school graduate, current or past member of Boys and Girls Club, acceptance into an institution of higher learning. High school seniors may apply and eligibility shall continue throughout college or trade school.

## NANCY J. McDANIEL REASON COMMUNITY DEVELOPMENT ENDOWMENT FUND

The purpose of this Fund is to assist in the positive moral, social, and psychological development and growth of Hancock County and its citizens by supporting

projects and programs of organizations residing in Hancock County. Areas of emphasis include health and human services, education, arts and culture, civic affairs, and youth development.

## PURDUE CLUB OF HANCOCK COUNTY PURDUE OPPORTUNITY SCHOLARSHIP ENDOWMENT FUND

The primary purpose of the Fund is to provide scholarship support to graduating seniors who are residents of Hancock County and have been accepted to Purdue University. The income from this Fund shall be administered in conjunction with Purdue University's Purdue Opportunity Awards Program combining federal, work-study, and state funding to provide a total financial aid package equal to a student's tuition, room, and board for his or her first two years at Purdue University. Scholarships will be granted to students with financial need.

## DON RICKETT SCHOLARSHIP ENDOWMENT FUND

Established in honor of Mr. Rickett, who retired as a Greenfield-Central English teacher, the Fund shall award a scholarship to a graduating senior from

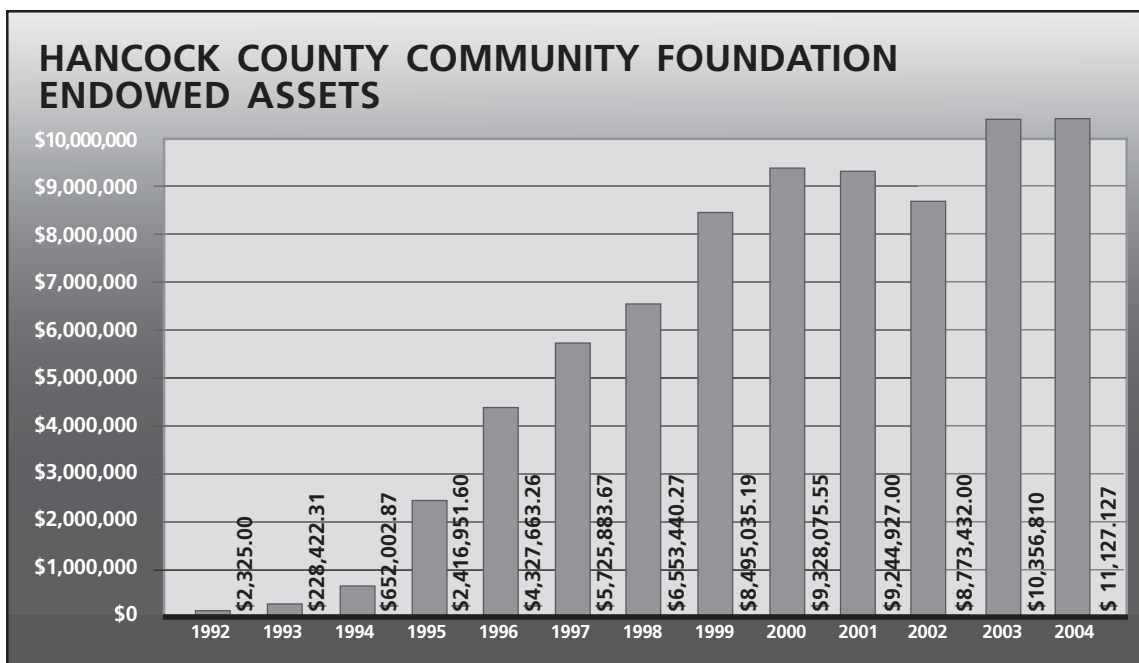
Greenfield-Central High School who shall attend a vocational school, business college, or junior college in pursuit of trade or technology-based certifications and/or two-year degree. The recipient must have graduated with no less than a "C" average. In addition, the graduate must have completed the Technical Communications course with no less than a "C" average. The primary criterion is based on financial need.

## KEVIN STORM MEMORIAL SCHOLARSHIP ENDOWMENT FUND

This Fund was established to provide educational support in the form of scholarships to graduating seniors of Greenfield-Central High School who have been accepted as full-time students at Purdue University. The criteria for this award shall be based on academic achievement, extracurricular activity, community involvement, and good moral character. Need may be considered as a part of the selection criteria. Priority may be given to those students planning to study pharmacy.

## MILDRED HAWKINS WILFONG SCHOLARSHIP FUND

The primary purpose of the Fund shall be to provide financial assistance to a graduating senior of Greenfield-Central High School who shall attend a college, university, or vocational/technical school in the state of Indiana pursuing an accredited degree or certification. The recipient must graduate in the top 1/3 (one-third) of his or her graduating class. The primary criterion is based on financial need.



# 2004 FUNDS

## ENDOWMENT FUNDS, CHARITABLE REMAINDER TRUSTS, GIFTS OF REAL PROPERTY, AND PASS-THROUGH FUNDS

**ACE ENDOWMENT FUND**—established to provide income to the Hancock County Community College to be used for operating expenses and capital expenses or improvements.

**ADDICTIONS AND SUBSTANCE ABUSE EDUCATION AND TREATMENT ENDOWMENT FUND**—established to assist agencies that provide direct services for education and/or treatment to those persons who have suffered or are suffering from addictions to alcohol and/or controlled substances.

**ADULT RE-EDUCATION SCHOLARSHIP FUND**—established to provide financial support to those persons who wish to obtain additional education and/or training after the normal course of their education or vocational training has been interrupted for any reason.

**AMBASSADOR FUND**—established to provide help for the Foundation to continue its growth, increase its service to the community and broaden public awareness and understanding of the Foundation through community grantmaking.

**JIM ANDREWS SCHOLARSHIP ENDOWMENT FUND**—established in honor of former Hancock County Boys and Girls Club Executive Director, Jim Andrews, this fund provides a scholarship to a current or past member of the Boys and Girls Club who is a high school graduate and has been accepted into an institution of higher learning.

**THE ARC OF HANCOCK COUNTY, INC. ENDOWMENT FUND**—established to provide income to be used by The Arc of Hancock County, Inc. at its discretion.

**MARY ASH SCOTT BARDONNER BARDES SCHOLARSHIP ENDOWMENT FUND**—established to provide a scholarship to a graduating senior from New Palestine High School who is interested in becoming an elementary or secondary education teacher. The recipient must live in either Brandywine or Sugar Creek township and shall be selected upon

the basis of financial need and academic achievement.

**BILL AND BEVERLY BAUGH ENDOWMENT FUND**—established to benefit programs and organizations of the founders' choosing.

**BECKENHOLDT FAMILY SCHOLARSHIP ENDOWMENT FUND**—established to provide a four-year scholarship to a graduate of Cowan High School who is attending a four-year college or university on a full-time basis.

**JOHN C. BEESON HUMANITARIAN ENDOWMENT FUND**—established to benefit the Arc of Hancock County and the Hancock Hope House.

**LEE AND BESSIE BLAZER MEMORIAL SCHOLARSHIP ENDOWMENT FUND**—established to provide support to graduates of Hancock County High Schools who have been accepted to study music in a college or conservatory.

**BONA de FRATERI FUND**—established to provide support to nonprofit organizations, projects, or initiatives in the United States.

**BOYS AND GIRLS CLUB OF HANCOCK COUNTY ENDOWMENT FUND**—established to provide assistance in fulfilling the mission of the founder in providing a character building experience for the youth of Hancock County through educational and recreational activities.

**BRADLEY UNITED METHODIST CHURCH ENDOWMENT TRUST FUND**—established to provide perpetual income to be used by the Board of Trustees pursuant to the Bradley United Methodist Church Endowment Trust.

**EARL J. BROOKS & IRENE B. BROOKS SCHOLARSHIP TRUST FUND**—established to provide a scholarship to one student from each of the Hancock County high schools, who is graduating or has graduated and is attending an accredited college/university leading to a baccalaureate degree.



**BROOKVILLE MARRIAGE ENDOWMENT FUND**—established to benefit the married couples enrichment program at the Brookville Road Community Church.

**RAYMOND E., LEOMA, LOWELL E., AND JUNE MARIE BRUNE SCHOLARSHIP ENDOWMENT FUND**—established to provide a scholarship to a student who has graduated from Mt. Vernon High School or New Palestine High School and has participated on a sports, cheerleading, or music team as a junior and as a senior.

**REINHARD L. AND MARLISE BUBENZER COMMUNITY DEVELOPMENT ENDOWMENT FUND**—established to allow the Hancock County Community Foundation to provide grants in the areas of health and human services, education, arts and culture, civic affairs, and youth development.

**DR. REINHARD AND MARLISE BUBENZER ENDOWMENT FUND**—established to provide a scholarship for students who pursue a career in a medical field.

**STEVEN L. BUTTERFIELD ENDOWMENT FUND**—established in memory of Steven Butterfield to provide a scholarship to a graduating senior who is a current member of the Boys and Girls Club.

**LEEANN DOLICK-COX MEMORIAL SCHOLARSHIP ENDOWMENT FUND**—established to create a scholarship for a graduating senior from New Palestine High School who



has participated in marching band or color guard during his/her junior and senior years.

**RICHARD H. CROSSER MEMORIAL SCHOLARSHIP FUND FOR GREENFIELD-CENTRAL HIGH SCHOOL**—established to provide scholarship to a student graduating from Greenfield-Central High School in 2005 pursuing a degree in a field relating to the building trades.

**RICHARD H. CROSSER MEMORIAL SCHOLARSHIP FUND FOR MT. VERNON HIGH SCHOOL**—established to provide scholarships to students graduating from Mt. Vernon High School and pursuing a degree in a field relating to the building trades.

**BERT AND IRENE CURRY CHARITABLE ENDOWMENT FUND**—established to benefit charitable organizations of the contributors' choosing.

**IRENE AND BERT CURRY OPERATING ENDOWMENT FUND**—established to provide support for the operations of the Hancock County Community Foundation, Inc.

**CARLINE DAY SCHOLARSHIP ENDOWMENT FUND**—established to provide a scholarship to a graduating senior from New Palestine High School.

**DAISY DIMOND CHARITABLE ENDOWMENT FUND**—established by the Bill Wilson family in memory of Mr. Wilson's mother to maintain an endowment for charitable purposes to named organizations.

**ROBERT G. DUGGER ENDOWMENT FUND**—established to provide support to organizations, projects, or initiatives in Hancock County dedicated to

the benefit of youth of Hancock County in competitive sport endeavors.

**RICHARD L. DUNLAVY AND RUTH E. PROFFER DUNLAVY CHARITABLE ENDOWMENT FUND**—established to maintain an endowment for charitable purposes to named organizations.

**DONNA DUZAN NURSING SCHOLARSHIP ENDOWMENT FUND**—established to provide a scholarship to a Hancock County resident wanting to become a registered nurse or to specialize in the nursing field.

**EMERITUS ENDOWMENT FUND**—established by the Hancock County Community Foundation Board of Directors to allow the HCCF Emeritus Board to annually select a tax-exempt organization that has shown leadership in community affairs to receive a grant from this fund.

**AMY MCKEE-EVERETT MEMORIAL SCHOLARSHIP ENDOWMENT FUND**—established to provide a scholarship for a Greenfield-Central High School senior who will attend an Indiana college or university, has no less than a "C+" average and has shown service to the community.

**JOE FISK MEMORIAL FOR BOYS AND GIRLS CLUB ENDOWMENT FUND**—established to assist with the mission of the Boys and Girls Club of Hancock County, Inc.

**MATTHEW A. FOLKENING MEMORIAL SCHOLARSHIP ENDOWMENT FUND**—established to provide a scholarship to a New Palestine graduate who demonstrated a 'team player' spirit while playing golf as a junior and senior, and has at least a 2.3 grade point average.

**FORTVILLE-VERNON TOWNSHIP LIBRARY ENDOWMENT FUND**—established to provide income which shall be used to better meet the educational needs of the library's patronage and to facilitate future capital improvements.

**VALEDA M. FOUST CHARITABLE ENDOWMENT FUND**—established by Mrs. Foust to provide charitable support for the Christian Church of Greenfield.

**GLEN COVE CEMETERY ENDOWMENT FUND**—established for the general maintenance of the Glen Cove Cemetery, Knightstown, IN.

**ROBERT H. GLENN ENDOWMENT FUND**—established to provide educational support for the families of the Greenfield Church of Christ located on Bruner Drive, Greenfield, Indiana, who attend a Christian college or university.

**JOHN H. GLICK ROTARY ENDOWMENT FUND**—established to provide income to the Rotary Club of Napoleon, OH.

**GREENFIELD-CENTRAL COMMUNITY SCHOOL CORPORATION ENDOWMENT FUND**—established to support activities at the discretion of Greenfield-Central Community School Corporation.

**GREENFIELD KIWANIS SCHOLARSHIP ENDOWMENT FUND**—established to provide a scholarship to a graduating senior who will attend an accredited college or university.

**GREENFIELD PARKS, RECREATION AND SENIOR CITIZENS ENDOWMENT FUND**—established to provide assistance and support the legacy of quality parks and recreational services and facilities, as provided by the City of Greenfield and its Board of Parks and Recreation.

**GREENFIELD REVITALIZATION, INC.**—established to provide support to the city of Greenfield for the maintenance of the banners located in the downtown area.

**GREENFIELD ROTARY SCHOLARSHIP ENDOWMENT FUND**—established to provide educational support for a graduating senior[s] from Greenfield-

Central High School who will attend an accredited college or university.

**ELBERT AND FLO GRIFFITH LIBRARY ENDOWMENT FUND**—established to provide assistance to Hancock County high school libraries.

**HANCOCK COUNTY COMMUNITY FOUNDATION OPERATING ENDOWMENT FUND**—established to provide income for underwriting the Foundation's operating expenses.

**HANCOCK COUNTY COMMUNITY FOUNDATION SCHOLARSHIP ENDOWMENT FUND**—established to provide scholarships to the finalists (excluding the recipients) of the Lilly Endowment Community Scholarship Award.



**HANCOCK COUNTY ENDOWMENT FOR THE ARTS**—established with the purpose of supporting the arts for Hancock County residents.

**HANCOCK COUNTY EXTENSION HOMEMAKERS ENDOWMENT FUND**—established to provide two scholarships. One scholarship will be given to a Hancock County resident graduating from a Hancock County high school. The second scholarship, known as "Mildred Campbell Little Career Advancement Scholarship Award" is for an adult Hancock County resident.

**HANCOCK COUNTY FRIENDS OF THE FAMILY ENDOWMENT FUND**—established to provide funds for operations, capital expenses, and capital improvements for the Hancock County office.

**HANCOCK COUNTY PERFORMING ARTS ENDOWMENT FUND**—established to provide supplemental income to support a free summer concert series featuring professional musicians.

**HANCOCK COUNTY PUBLIC LIBRARY ENDOWMENT FUND**—established to provide for operations, capital expenses, and capital improvements for the Hancock County Public Library.

**HANCOCK COUNTY SENIOR SERVICES, INC. ENDOWMENT FUND**—established to assist in providing comprehensive support services to Hancock County residents who are sixty years or older or disabled. An additional purpose is to promote community awareness of the issues and challenges facing this population and seek solutions to these issues and challenges.

**HANCOCK COUNTY SENIOR SERVICES HANDYMAN ENDOWMENT FUND**—established to assist in supporting operating and program costs associated with the Hancock County Senior Services Handyman Program.

**HANCOCK COUNTY SHRINE CLUB ENDOWMENT FUND**—established to provide a scholarship to a Hancock County high school graduate or graduating senior who is entering the medical field.

**HANCOCK HOPE HOUSE ENDOWMENT FUND**—established to use the income from this fund for its operations, capital expenses, and capital improvements.

**HANCOCK TELECOM RAY OF LIGHT FUND**—established to assist in the positive moral, social, and psychological development and growth of Hancock County, West Henry County, and South Madison County and their citizens. Grants from this fund may be given in the areas of health and human services, education, arts and culture, civic affairs, and youth development.

**PHILIP R. HOLLENBAUGH PHOTOGRAPHY ENDOWMENT FUND**—established to provide support to charitable organizations, projects, or initiatives in Hancock County dedicated to the promotion of the field of photography.

**MERVIN K. HOLZHAUSEN MEMORIAL SCHOLARSHIP ENDOWMENT FUND**—established to provide financial support for a graduating senior from one of the county's high schools who intends to

major in education at an accredited Indiana college or university.

**HOSPITAL FOUNDATION LEGACY ENDOWMENT FUND**—established to provide income for equipment and/or programs that support the mission statement of Hancock Memorial Hospital and Health Services.

**MIKE JOHNSON MEMORIAL SCHOLARSHIP ENDOWMENT FUND**—established to provide a scholarship to a graduating senior of Mt. Vernon High School, who is a member of the Student Staff.

**JUDY AND HOWARD JONES SCHOLARSHIP ENDOWMENT FUND**—established to benefit a graduating senior from New Palestine High School. The recipient must have not less than a "B" average and plan to attend a college, university, vocational, or technical school. The primary selection criteria are high moral character and need.

**DR. AND MRS. CHARLES E. JORDAN COMMUNITY DEVELOPMENT ENDOWMENT FUND**—established to benefit programs of nonprofit agencies in Hancock County with unrestricted grants issued by HCCF.

**DR. MICHAEL G. KAPP AND SUSAN J. DEATLEY KAPP SCHOLARSHIP ENDOWMENT FUND**—established to provide scholarships to students at Warren Central High School, Marion County, IN, who plan to attend a college or university in the state of Indiana and who have not less than a "B-" average. Need and outstanding character are the primary criteria for selection.

**DR. BRIAN AND CHARLOTTE KIRKWOOD SCHOLARSHIP ENDOWMENT FUND**—established to provide a scholarship to a Hancock County resident.

**GEORGE H. KLEIMAN AND HILDA E. KLEIMAN CHARITABLE ENDOWMENT FUND**—established to provide support for the Zion Lutheran Church and the Zion Lutheran Cemetery in New Palestine, IN, as well as the St. Jude Research Hospital in Memphis, TN.

**FLORENCE M. LACY SCHOLARSHIP TRUST FUND**—established to provide

educational support for students to attend college who have graduated from or are graduating from either Eastern Hancock High School or Greenfield-Central High School and are residents of Hancock County.

**HUGH LEARY MEMORIAL SCHOLARSHIP ENDOWMENT FUND**—established to provide a scholarship to a graduating senior from Greenfield-Central High School who wants to continue educational pursuits in the vocational technical profession.

**MARK MATTICK MENTAL ATTITUDE ENDOWMENT FUND**—established to provide a scholarship to a senior band member of Mt. Vernon High School.

**KEITH AND JOANNE McCLARNON REGREENING ENDOWMENT FUND**—established to assist re-forestation, landscaping, beautification, and general improvement of the environment in Hancock County.

**BRUCE McKINNEY MEMORIAL SCHOLARSHIP ENDOWMENT FUND**—established to provide a scholarship for a graduating senior of Mt. Vernon High School who is a member of the National Art Honor Society.

**NANCY TERRELL MILLER ENDOWMENT FUND**—established to provide support to organizations, projects, or initiatives in Vernon Township and/or Hancock County dedicated to helping youth and individuals in need of special services or fire protection.

**WALTER W. MITTEN FAMILY MEMORIAL SCHOLARSHIP TRUST FUND**—established to provide a scholarship to a graduating senior of a Hancock County high school.

**MARJORIE A. MORELOCK AND DONALD H. MORELOCK ENDOWMENT FUND**—established to benefit the Riley Hospital for Children to help defray the expenses for needy Indiana residents (children) born with a cleft palate, harelip, and/or eyesight problems.

**CHARLES AND MARIANNE PASCO MEMORIAL ENDOWMENT FUND**—established to provide for the maintenance and operating expenses of the Hancock County Community Foundation office.

**DEBRA L. PLANK MEMORIAL SCHOLARSHIP ENDOWMENT FUND**—established to provide support for students who are U. S. citizens and have participated in at least one 4-H food project for a minimum of six years.

**VIVA PRESSLER SCHOLARSHIP ENDOWMENT FUND**—established from a trust set up by Mrs. Pressler, this Fund is to provide scholarships to students who have graduated from a public high school in Hancock County, are in need of this scholarship in order to continue their education, and have carried a “B” average in mathematics and science in high school.

**W. H. and LOLA REASON ENDOWMENT FOR PATRIOTISM FUND**—established to celebrate the lives of William and Lola Reason, this fund shall be used to support programs and initiatives in an effort to educate the youth of Hancock County as to the sacrifices men and women made in protecting the United States during World War II.

**JAMES WHITCOMB RILEY FESTIVAL SCHOLARSHIP ENDOWMENT FUND**—established to provide a scholarship to a graduating senior from one of the county high schools.

**HELEN ROATH MEMORIAL SCHOLARSHIP ENDOWMENT FUND**—established to provide a scholarship to a Hancock County resident whose education has been interrupted. The Upsilon chapter of Tri Kappa will serve as the selection committee.

**ROTARY CLUB OF GREENFIELD EDUCATION ENDOWMENT FUND**—established to provide scholarships for Hancock County residents who want to continue their skills and education.

**SET A GOOD EXAMPLE FOUNDATION, INC. ENDOWMENT FUND**—established to provide assistance in fulfilling the mission of making popular being a positive role model in the Greenfield-Central Community School Corporation.

**GLADYS HANCOCK SHUMWAY SCHOLARSHIP ENDOWMENT FUND**—established to provide educational support for a graduating senior of Mt. Vernon High School.

**J. A. SMITH AND V. S. SMITH ENDOWMENT FUND**—established as a

donor directed fund to benefit the contributors' church.

**JUDY D. SMITH MEMORIAL SCHOLARSHIP FUND**—established to provide a scholarship for a graduating senior of Mt. Vernon High School who is a resident of Hancock County and intends to major in elementary education.

**ASHLEE BROOKE SPANGLER MEMORIAL SCHOLARSHIP ENDOWMENT FUND**—established to provide educational support for a graduating senior of New Palestine High School.

**LEWIS AND LOUISE SPILKER MEMORIAL EDUCATION SCHOLARSHIP ENDOWMENT FUND**—established to provide a scholarship to both a male student and a female student from Warren Central High School.

**CHRIS SULLIVAN MEMORIAL MUSIC BOOSTER SCHOLARSHIP ENDOWMENT FUND**—established to provide a scholarship to a graduating senior who participated in the music area during each year while attending Mt. Vernon High School.

**EDWARD F. SZYMANSKI ENDOWMENT FUND**—established to provide support to the Christian Foundation for Children and Aging, the Catholic Foreign Mission Society of America, and the Catholic Relief Services.

**BOB TRACY BUSINESS SCHOLARSHIP ENDOWMENT FUND**—established in memory of Mr. Tracy, this scholarship will be awarded to a Greenfield-Central High School graduating senior who plans to study business at Indiana University.

**GEORGE AND ICY VAUGHN PERFORMING ARTS ENDOWMENT FUND**—established to underwrite performing arts competitions and scholarships for Hancock County youth.

**VETERANS OF FOREIGN WARS POST 6904 PENDLETON HEIGHTS SCHOLARSHIP ENDOWMENT FUND**—established to provide a scholarship to a graduating senior from Pendleton Heights High School.

**VETERANS OF FOREIGN WARS POST 6904 SCHOLARSHIP ENDOWMENT FUND**—established to provide educational support to graduates of Mt. Vernon High School.

**ANN WAITT MEMORIAL SCHOLARSHIP ENDOWMENT FUND**—established to provide scholarships to Hancock County 4-H members who have just completed their final year of 4-H activity.

**WILFONG FAMILY SCHOLARSHIP FUND**—established as a need-based scholarship to provide financial assistance to a graduating senior attending Eastern Hancock High School. The recipient must graduate in the top 1/3 (one-third) of his or her class and plan to attend an accredited college, university, or vocational/technical school in the state of Indiana.

**HAZEL SITTON WOOST SCHOLARSHIP**—established to provide support to two (2) students

from Greenfield-Central High School wishing to pursue their education at the Indiana Business College in Indianapolis.

**WALTER P. AND VIRGINIA WORLAND SCHOLARSHIP ENDOWMENT FUND**—established to provide scholarships to a graduating senior from Eastern Hancock, Greenfield-Central, Mt. Vernon, and New Palestine High Schools who shall attend a vocational school or junior college in pursuit of trade or technology-based certifications or two (2)-year degrees. A similar scholarship will be awarded, in the name of Tolbert and Dorothy Ward, to a graduating senior from Greenfield-Central High School. The selection criteria for these scholar-

ships are leadership qualities, teacher recommendations, academic achievement, and graduating with no less than a “C” average.

**JEREMIAH AND TABBATHA ZAPF MEMORIAL 4-H SCHOLARSHIP ENDOWMENT FUND**—established to provide two scholarships for Hancock County 4-H members.

**EDITH ZIKE MEMORIAL NURSING OR PRE-NURSING SCHOLARSHIP ENDOWMENT FUND**—established to provide educational support for nursing students who either work in a health care capacity in Hancock County or live in Hancock County.

## **CHARITABLE REMAINDER TRUSTS**

**MARTHA BECKENHOLDT CHARITABLE REMAINDER TRUST**—established to provide an endowment for charitable purposes in perpetuity to named organizations.

**DORIS A. BOND CHARITABLE REMAINDER TRUST**—established to provide an endowment for charitable purposes in perpetuity to named organizations.

**CHRISTIAN L. GRIES AND JUNE GRIES CHARITABLE REMAINDER TRUST**—established to provide an endowment for charitable purposes in perpetuity to named organizations.

**WALTER AND DOROTHY HELFENBERGER CHARITABLE REMAINDER TRUST**—established to honor Walter Helfenberger and provide an endowment for charitable purposes in perpetuity to named organizations.

**PEARSON MILLER AND JEANNINE MILLER CHARITABLE REMAINDER TRUST**—established to provide an endowment for charitable purposes in perpetuity to named organizations.

**LEON WILSON AND MINNIE LOU WILSON CHARITABLE REMAINDER TRUST**—established to provide an endowment for charitable purposes in perpetuity to named organizations.



## **CHARITABLE GIFT ANNUITIES**

**NOBLE AND WILMA I. CLEMENTS CHARITABLE GIFT ANNUITY**—established to provide an endowment for charitable purposes in perpetuity to named organizations.

**WILLIAM J. GRIFFING AND ANNA B. GRIFFING CHARITABLE GIFT ANNUITY**—established to provide an endowment for the Hancock County Community Foundation’s Ambassador Fund in perpetuity.

**EDWARD L. VEENHUIZEN AND SALLY A. VEENHUIZEN CHARITABLE GIFT ANNUITY**—established to provide an endowment for charitable purposes in perpetuity to named organizations.

## **GIFTS OF REAL PROPERTY**

**ARMIN F. and DOROTHY K. SCHRAMM**—The donated acres of wooded land will be used as a nature preserve.

## **PASS-THROUGH FUNDS**

**DEFIBRILLATORS PROJECT FUND**—The Foundation will assist the

*Greenfield Police Department and the Hancock County Sheriff’s Department* in administering donations made to the fundraising campaign to purchase mobile defibrillators.

**HANCOCK COUNTY CEMETERY COMMISSION PASS-THROUGH FUND**—The purpose of the pass-through fund is to provide administrative and fund raising support to the *Hancock County Cemetery Commission* regarding funds donated to the commission for the purposes outlined in Ordinance No. 2001-8B.

**TEDDY CARES**—Funds are used for the “Teddy Cares” program as administered by the *Daily Reporter*.



# 2004 BOARD OF DIRECTORS



*Karen Tarver,  
Chair*



*Rick Edwards,  
Vice-Chair*



*Gregg Morelock,  
Secretary*



*Jim Snapp,  
Treasurer*



*Myra Bleill*



*Cherie Burrow*



*Dennis Chapman*



*Beverly Gard*



*Mary Gibble*



*Howard Green*



*Jaris Hammond*



*Jim Miller*



*Ronnie Mohr*



*David O'Donnell*



*Rick Roberts*



*Darlene Seifert*



*Darrell Thomas*



*Jerry Walker*



*David Woods*



*Linda Zimmermann*

## OUR STAFF



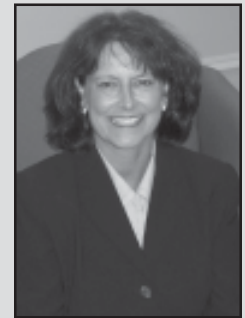
*John Carreon  
President*



*Phyllis Polizotto  
Controller*



*Carla Bullman  
Administrative  
Assistant*



*Nancy Reason  
Program Officer*



*Larry Yazel  
CAPE Project  
Officer*

# 2004 CONTRIBUTORS



Mr. and Mrs. Larry Amick  
 Anonymous  
 Anonymous  
 Anonymous  
 Anonymous  
 Ms. Kristine Armour  
 Mr. and Mrs. Ned A. Arthur  
 Mr. and Mrs. Robert Arthur  
 Mr. and Mrs. Ronald Arthur  
 and Family  
 Mr. and Mrs. Greg Bardonner  
 Trudy A. Bartlett  
 Ms. Martha Bauchert  
 Ms. Barbara Beck  
 Mr. and Mrs. Wayne Beck  
 Mr. and Mrs. Bruce Beeker  
 Ms. Karen Beeson  
 Lisa, Hannah and Tyler  
 Beeson  
 Mr. and Mrs. Thomas Bennett  
 Mr. and Mrs. Carl Benson  
 Mr. and Mrs. Robert Bever  
 Mrs. Susie Billings  
 Billie Bishop  
 Mr. and Mrs. Virgil Bleill  
 Ms. Bertha Bliton  
 Gilbert and Sandra Bliton  
 Mr. and Mrs. Tom Bloodgood  
 Mr. and Mrs. Andrew Blueher  
 Mr. Robert Bogigian  
 Mr. and Mrs. Bob Bolander  
 Mr. and Mrs. Donald Bowen  
 Dr. and Mrs. Richard Bowen  
 Ms. Marie T. Brier  
 Mr. and Mrs. Michael D.  
 Broome  
 Mr. and Mrs. Brian Brown  
 Mr. Jon Brown  
 Dr. and Mrs. Reinhard  
 Bubenzer  
 Mrs. Patricia Ann Buesking  
 Mr. and Mrs. Gary Bullman  
 Mr. Gregory Bullman  
 Ms. Phyllis Burch-VanAllen

Ms. Dawn Burdine  
 Mr. and Mrs. Kevin Burke  
 Mr. and Mrs. Mike Burrow  
 Ms. Ina Cain  
 Mr. and Mrs. James Cain  
 Mr. and Mrs. Timothy Cain  
 Dan Carmony and Family  
 Mr. and Mrs. John Carreon  
 Central Indiana  
 Communications  
 Mr. and Mrs. Dennis  
 Chapman  
 Mr. and Mrs. Larry Clapp, Jr.  
 Mr. and Mrs. Gary Clark  
 Mr. C. Thomas Cone  
 Ms. Janice Conley  
 Clay and Becky Cooper  
 Mr. David Cotton  
 Crescent Electric Supply  
 Company  
 Mr. and Mrs. Robert Crisci, Sr.  
 Mr. and Mrs. Harold Crock  
 Mr. and Mrs. Dwight  
 Cummings  
 Mr. and Mrs. Bert Curry  
 Cynthia's Hallmark  
 Daily Reporter  
 Ms. Cynthia A. D'Ambrosio  
 Mr. and Mrs. Ellsworth  
 Davidson  
 Dr. and Mrs. Michael Day  
 Mr. and Mrs. William Deal  
 Ms. Suzanne Dettwiler  
 Mr. Ron Dezelan  
 Dickmann, Reason, and  
 Bogigian  
 Ms. Kathleen Dowling  
 Mr. and Mrs. Richard Duncan  
 Mr. and Mrs. Norris Dunham  
 Mr. and Mrs. Steve Durack  
 Mr. and Mrs. Larry Earl  
 Mr. and Mrs. Rick Edwards  
 Eli Lilly and Co. Foundation  
 Larry D. Ellett  
 Erlewein Mortuary

Mr. and Mrs. William Ewing, Jr.  
 Dr. and Mrs. John J. Farrell  
 Mr. and Mrs. Ernest Fee  
 Mr. David Felkins  
 Mr. and Mrs. Gale Ferris  
 Five Points Rd. Dev. Co., L.L.C.  
 Mrs. Virginia Flynn  
 Mr. and Mrs. David Folkening  
 Mr. and Mrs. Dean A.  
 Folkening  
 Fortville Tire Center  
 Fortville Vernon Twp. Library  
 Boris Frank Associates  
 Mrs. William Frick  
 Mr. and Mrs. William D. Fry  
 Mr. and Mrs. James Fuller  
 Dr. and Mrs. Ted Gabrielsen  
 Mr. and Mrs. Tom Gamble  
 Gannett Foundation  
 Dr. Don and Sen. Beverly  
 Gard  
 Mr. and Mrs. Libero A.  
 Gardello  
 Mr. John Garland  
 Mr. Kenneth Garrity  
 Mr. and Mrs. Greg Gibble  
 Mr. and Mrs. Robert Gibson  
 Mr. and Mrs. Larry Gilpin  
 GlaxoSmithKline  
 Ms. Carolyn Grass  
 Mr. and Mrs. Howard Green  
 Greenfield Banking Company  
 Greenfield Daily Reporter  
 Greenfield Parks - Recreation  
 Greenfield-Central High  
 School  
 Mr. Raymond H. Greenlaw, Jr.  
 Grooms Tire Recycling, Inc.  
 Mr. C. A. Groseclose  
 Kim Gross  
 Mr. and Mrs. Robert Groves, Jr.  
 Grow and Share Garden Club  
 Ms. Stephanie Guerrera  
 Ms. Janet M. Guildenbecher  
 Ms. Pearlann P. Haines  
 Mr. and Mrs. Jim Hall  
 Ms. Jennifer Halsey  
 Mr. and Mrs. Robert  
 Hammond  
 Ms. Georgia Hancock  
 Mr. and Mrs. Stanley Hancock  
 Hancock Co. Extension  
 Homemakers Association  
 Hancock Co. Herb Society  
 Hancock Co. Senior Services  
 Hancock County Public  
 Library  
 Hancock County Public  
 Library Staff  
 Hancock County Shrine Club

Hancock Hope House  
 Hancock Memorial Hospital  
 and Health Services  
 Hancock Memorial Hospital  
 Foundation  
 Hancock Telecom  
 Mr. and Mrs. Robert Hanks  
 Mrs. Don Hanson  
 Ms. Hazel Hassen  
 Mr. and Mrs. Norman Hart  
 Mr. and Mrs. Albert Hartman  
 Mr. and Mrs. Scott Hasty  
 Mr. and Mrs. Donald Hatke  
 Mr. and Mrs. Philip Hayes  
 Mr. and Mrs. David Heller  
 Mr. and Mrs. Todd Heller  
 Mr. and Mrs. Marc Hill  
 Mr. and Mrs. Steven Hill  
 Ms. Dana M. Hochstetler  
 Ms. Claire Holloway  
 Mr. and Mrs. David Holman  
 Mrs. Eleanor Holzhausen  
 Home News Enterprises  
 Mr. and Mrs. Henry Hopkins  
 Mr. and Mrs. Floyd Hoppes  
 Mr. and Mrs. Ryan Hornaday  
 Ms. Brenda Howell  
 Mr. and Mrs. James L.  
 Hundley  
 Mr. and Mrs. Robert Hundley  
 Mr. John Ianacone  
 Ms. Carolyn James  
 Mr. John Jarrett  
 Mrs. Mary Jarrett  
 Ms. Paula Jarrett  
 Mr. and Mrs. John Jarrett, Sr.  
 Mr. and Mrs. Phillip John  
 Ms. Teresa Johns  
 Dan and Patty Johnson  
 Mr. and Mrs. Ralph Johnson  
 Mrs. Judy Jones  
 Dr. and Mrs. Charles Jordan  
 Dr. and Mrs. Michael Kapp  
 Kappa Kappa Kappa Alpha  
 Associates  
 Mr. and Mrs. Pat Kauchak  
 Keihin IPT Manufacturing, Inc.  
 Kemper CPA Group  
 Mr. David Kennedy  
 Mr. and Mrs. Clark Ketchum  
 Kids and Kettles  
 Mr. and Mrs. John King  
 Dr. and Mrs. Brian Kirkwood  
 Mr. and Mrs. Scott Kleine  
 Mrs. Kristin Klinger-Thomas  
 Mr. and Mrs. D. E. Kuhn  
 Mr. and Mrs. Floyd Kuhn  
 Mr. and Mrs. James E. Kuntz  
 Mr. and Mrs. Roger Lafferty  
 Mr. and Mrs. Jim Landes

Mrs. Barbara Leary  
 Ms. Marilyn Levering  
 Mr. and Mrs. Paul Lillyblade  
 Mr. Todd Livesay  
 Mr. John Long  
 Mr. Thomas D. Macy  
 Mr. and Mrs. William Marcotte  
 Mr. and Mrs. Dale Marcum  
 Ms. Shannon Marcum  
 Marlin Plant Kingdom  
 Mr. A. Mathieson  
 McCord Insurance Agency  
 Mr. and Mrs. Robert McCorkle  
 McDonald's Corporation  
 Mr. and Mrs. J. McGee  
 Gail L. McLahlan  
 Mr. and Mrs. Gerald Memmer  
 Ken and Kathy Menser and Boys  
 Mr. and Mrs. Ray Merlau  
 Mr. and Mrs. Ronald Milender  
 Mr. James W. Miller  
 Mr. and Mrs. Pearson Miller  
 Mr. and Mrs. Tom Miller  
 Mrs. Cathy Milner-Garrity  
 Mr. and Mrs. Ronnie Mohr  
 Mr. and Mrs. Jason Moore  
 Mr. and Mrs. Ronald K. Moore  
 Mrs. Donald Morelock  
 Mr. Gregg Morelock  
 Mr. Scott Morelock  
 Ms. Rowena Morelock Reese  
 Mothers Club/Boys and Girls Club of Hancock County  
 Mt. Vernon Elementary School  
 Mt. Vernon H. S. Band Boosters  
 Mr. Patrick Musgrave  
 Mr. and Mrs. Ralph Myerholtz  
 Mr. and Mrs. Donald Myers  
 National Bank of Indianapolis  
 National City Bank  
 Mr. and Mrs. Melvin Newman  
 Night Owl Quilters  
 Nightingale Medical of Indiana, LLC  
 Carma Nolen  
 Allen Nolen and Family  
 Hubert Nolen and Family  
 Virgil Nolen, Jr. and Family  
 Mr. and Mrs. David O'Donnell  
 Ms. Ann Osborne  
 Mr. and Mrs. D. Chris Osborne  
 Paragon Development, Inc.

Mr. and Mrs. Michael C. Parker  
 Mr. and Mrs. David C. Pasco  
 Mr. and Mrs. David Patrick  
 Mr. and Mrs. Ancil Paugh  
 Mr. and Mrs. Dewayne Paugh  
 Mr. and Mrs. Joe Paxton  
 Mr. and Mrs. William Paxton  
 Dr. David Payne  
 Pence, Low, and Brooks Ins.  
 Mr. and Mrs. Jerry Petty  
 Mr. and Mrs. Gerald Phares  
 Mr. and Mrs. Jeffrey Phares  
 Mr. and Mrs. Kenneth Phares  
 Mr. and Mrs. Robert Phares  
 Mr. and Mrs. Kim Polizotto  
 Mr. and Mrs. John Porter  
 Dr. and Mrs. Tyler Potter  
 Presbyterian Women's Assn.  
 Mr. and Mrs. Ron Pritzke  
 Pritzke and Davis  
 Mr. Jim Proper  
 R and F Development  
 Mr. and Mrs. Kurt Radtke  
 Mr. and Mrs. Keith Raisor  
 Ms. Thelma Raisor  
 Ms. Nancy Reason  
 Mr. Roger Reason  
 Mrs. W. H. Reason  
 Mr. and Mrs. Dennis Richardson  
 Ms. Rosalie Richardson  
 Mr. and Mrs. Dan Riley  
 Mr. and Mrs. Donald Ritter, Jr.  
 Ms. Cynthia A. Roath  
 Bob and Joan Roberts  
 Ms. Marjorie Roberts  
 Mr. and Mrs. Rick Roberts  
 Mr. and Mrs. Seth Roby  
 Mr. and Mrs. DeWayne Roland  
 Mr. and Mrs. Greg Roland  
 Steven and Joseph Roland  
 Mr. and Mrs. Michael Roney  
 Mr. Emmanuel Rosado  
 Mrs. Betty Rutledge  
 SAGE Foundation  
 Mr. Andrew Salamone  
 Mr. and Mrs. Larry Saunders  
 Ms. Eleanor Saunders  
 Mr. and Mrs. Norbert Schafer  
 Mr. and Mrs. Tim Schultz  
 Mr. and Mrs. Chris Seifert  
 Ms. Sharon Shapowal  
 Ms. Mary J. Shaw  
 Mr. and Mrs. Jim Shelby  
 Randall, Sheryl, and Amelia Shepherd  
 Navin O. Sheth  
 Mr. and Mrs. Richard Shore

Mr. and Mrs. Barry Shrum  
 Mrs. Cora Shrum  
 Mr. and Mrs. David Shrum  
 Ms. Norma Shrum  
 Mr. Gary Sickle  
 Mr. and Mrs. Ed Siurek  
 Ms. Patricia Slagle  
 Brandon and Kristy Smith  
 Brandon and Kristy Smith and Son  
 Mr. Brent V. Smith  
 Mr. Bruce Smith  
 Mrs. Elsie Smith  
 Mr. and Mrs. Harlan F. Smith  
 Mr. Jason K. Smith  
 Joe and Vicki Smith  
 Mr. and Mrs. Philip L. Smith  
 Mr. and Mrs. Steve Smith  
 Mr. and Mrs. James Snapp  
 Ms. Linda Snow  
 Mr. and Mrs. Gary Sparks  
 Mr. Oran Speas  
 Mr. David Spencer  
 Mr. and Mrs. David Spencer  
 Ms. Thelma Storm Spencer  
 Mr. and Mrs. Richard Spilker  
 Mr. and Mrs. Kerry Steele  
 Mr. and Mrs. Leonard Stoner  
 Mr. and Mrs. Robert Strickland  
 Mr. and Mrs. Tom Strickland  
 Ms. Pat Sullivan

Mr. and Mrs. Joe Swindell  
 Mr. Ed Szymanski  
 Dr. and Mrs. Robert Tarver  
 Mr. and Mrs. Jeffery Taylor  
 Mrs. Paul Terrell  
 Mr. Andrew Thomas  
 Mr. and Mrs. Darrell Thomas  
 Mrs. Mildred Tucker  
 Turf Tec, Inc.  
 Ms. Diane Tuttle  
 H. J. Umbaugh and Associates  
 Mr. and Mrs. E. R. Van Scyoc  
 Mr. Steve Voss  
 Mr. and Mrs. Bobby J. Wade, Jr.  
 Mr. and Mrs. Walter Waitt  
 Mr. and Mrs. Richard Wallsmith  
 Mr. and Mrs. Sidney Weedman  
 Mr. and Mrs. David Werking  
 Mr. and Mrs. Dale Whittleton  
 Mr. and Mrs. Paul Wilfong  
 Ms. Cheryl Wilfong  
 Wilfong Family  
 Mr. Greg Willhelm  
 Mr. and Mrs. John Winchester  
 Ms. Dorcas Wolfe  
 Mr. and Mrs. David Woods  
 Mr. and Mrs. Joe Woodward  
 Clair Wrightsman and Family  
 Mr. and Mrs. Harvey Zimmerman  
 John and Linda Zimmermann



# 2004 FINANCIAL STATEMENTS



## INDEPENDENT AUDITORS' REPORT

BOARD OF DIRECTORS  
HANCOCK COUNTY COMMUNITY  
FOUNDATION, INC.  
GREENFIELD, INDIANA

## HANCOCK COUNTY COMMUNITY FOUNDATION, INC.

STATEMENTS OF FINANCIAL POSITION  
FOR THE YEARS ENDED DECEMBER 31, 2004 AND 2003

We have audited the accompanying statements of financial position of Hancock County Community Foundation, Inc. (a not-for-profit corporation) as of December 31, 2004 and 2003, and the related statements of activities and cash flows for the years then ended. These financial statements are the responsibility of the Foundation's management. Our responsibility is to express an opinion on these financial statements based on our audit.

We conducted our audit in accordance with auditing standards generally accepted in the United States of America. Those standards require that we plan and perform the audit to obtain reasonable assurance about whether the financial statements are free from material misstatement. An audit includes examining, on a test basis, evidence supporting the amounts and disclosures in the financial statements. An audit also includes assessing the accounting principles used and significant estimates made by management, as well as evaluating the overall financial statement presentation. We believe that our audit provides a reasonable basis for our opinion.

In our opinion the financial statements referred to above present fairly, in all material respects, the financial position of Hancock County Community Foundation, Inc. as of December 31, 2004 and 2003, and the changes in its net assets and its cash flows for the years then ended, in conformity with generally accepted accounting principles.

February 25, 2005

*Richards CPA Group, Inc.*



### ASSETS

	2004	2003
Current assets:		
Cash on hand and in bank	\$ 566,758	484,006
Grants Receivable	14,500	0
Investments (note B)	11,127,127	10,798,754
<b>Total current assets</b>	<b>11,708,385</b>	<b>11,282,760</b>
Fixed assets:		
Headquarters building	704,047	697,854
Office equipment	80,135	79,423
Furniture and fixtures	24,490	24,490
	808,672	801,767
Less accumulated depreciation	(165,646)	(136,415)
<b>Total fixed assets</b>	<b>643,026</b>	<b>665,352</b>
	<b>\$ 12,351,411</b>	<b>11,948,112</b>

### LIABILITIES AND NET ASSETS

Current liabilities:		
Accounts payable	\$ 117,275	41,330
Payroll taxes withheld & accrued	1,526	4,072
<b>Total current liabilities</b>	<b>118,801</b>	<b>45,402</b>
Net assets:		
Unrestricted;		
Operating	306,469	438,604
Property and equipment	643,026	665,352
Temporarily restricted (note B)	155,988	0
Permanently restricted (note C)	11,127,127	10,798,754
<b>Total net assets</b>	<b>12,232,610</b>	<b>11,902,710</b>
	<b>\$ 12,351,411</b>	<b>11,948,112</b>

# HANCOCK COUNTY COMMUNITY FOUNDATION, INC.

## STATEMENTS OF ACTIVITIES FOR THE YEARS ENDED DECEMBER 31, 2004 AND 2003

	2004	2003
<u>UNRESTRICTED NET ASSETS</u>		
Support:		
General donations	\$ 0	107,217
Rental income, net	25,771	31,336
Interest income-operating	2,732	18,824
Total unrestricted support	<u>28,503</u>	<u>157,377</u>
Net assets released from restrictions	<u>919,816</u>	<u>1,024,059</u>
Total unrestricted support and reclassifications	<u>948,319</u>	<u>1,181,436</u>
Expenses:		
Program services	1,068,960	1,243,568
Management and general	33,820	32,192
Total expenses	<u>1,102,780</u>	<u>1,275,760</u>
Increase (decrease) in unrestricted net assets	<u>\$ (154,461)</u>	<u>(94,324)</u>
Temporarily restricted net assets (note B):		
Designated gifts & bequests	<u>155,988</u>	0
Increase (decrease) in temporarily restricted	<u>155,988</u>	0
Permanently restricted net assets:		
Designated endowments & support	524,068	924,388
Interest income-designated	329,638	311,939
Gains on securities	394,483	1,181,575
Assets released from restrictions	<u>(919,816)</u>	<u>(1,024,059)</u>
Increase (decrease) in permanently restricted	<u>328,373</u>	<u>1,393,843</u>
Increase (decrease) in net assets	<u>329,900</u>	<u>1,299,519</u>
<u>NET ASSETS</u>		
Beginning of period	<u>11,902,710</u>	<u>10,603,191</u>
End of period	<u>\$12,232,610</u>	<u>11,902,710</u>

# HANCOCK COUNTY COMMUNITY FOUNDATION, INC.

## STATEMENT OF FUNCTIONAL EXPENSES FOR THE YEAR ENDED DECEMBER 31, 2004

	Program Services	Management and General	Total
Grants paid	\$ 607,843	0	607,843
CAPE expenses	155,510	0	155,510
Personnel and fringes	153,917	19,023	172,940
Contract services	9,880	1,221	11,101
CRT payments	31,973	0	31,973
Fees, licenses and dues	1,882	233	2,115
Telephone and utilities	14,040	1,735	15,775
Postage	4,059	502	4,561
Office supplies	4,562	564	5,126
Printing and newsletter	11,515	1,423	12,938
Rent and cleaning	12,676	1,567	14,243
Insurance	5,601	692	6,293
Legal and professional	3,846	475	4,321
Promotional and marketing	10,425	1,288	11,713
Meetings and travel	13,184	1,630	14,814
Repairs and maintenance	1,663	206	1,869
Miscellaneous	368	46	414
Depreciation	<u>26,016</u>	<u>3,215</u>	<u>29,231</u>
Total	<u>\$ 1,068,960</u>	<u>33,820</u>	<u>1,102,780</u>

# HANCOCK COUNTY COMMUNITY FOUNDATION, INC.

## STATEMENT OF FUNCTIONAL EXPENSES FOR THE YEAR ENDED DECEMBER 31, 2003

	Program Services	Management and General	Total
Grants paid	\$ 603,035	0	603,035
CAPE expenses	359,609	0	359,609
Personnel and fringes	152,218	18,814	171,032
Contract services	12,141	1,501	13,642
CRT payments	20,475	0	20,475
Fees, licenses and dues	1,781	220	2,001
Telephone and utilities	16,480	2,037	18,517
Postage	2,247	278	2,525
Office supplies	2,480	306	2,786
Printing and newsletter	8,706	1,076	9,782
Rent/cleaning	6,687	827	7,514
Insurance	5,441	673	6,114
Legal and professional	2,601	321	2,922
Promotional and marketing	7,804	965	8,769
Meetings and travel	2,698	333	3,031
Educational	3,683	455	4,138
Repairs and maintenance	1,988	246	2,234
Miscellaneous	3,357	415	3,772
Depreciation	<u>30,137</u>	<u>3,725</u>	<u>33,862</u>
Total	<u>\$ 1,243,568</u>	<u>32,192</u>	<u>1,275,760</u>

# HANCOCK COUNTY COMMUNITY FOUNDATION, INC.

## STATEMENTS OF CASH FLOWS FOR THE YEARS ENDED DECEMBER 31, 2004 AND 2003

	2004	2003
Cash flows from operating activities:		
Increase (decrease) in net assets	\$ 329,900	1,299,519
Adjustments to reconcile increase (decrease) in net assets to net cash:		
Depreciation	29,231	33,862
(Increase) decrease in operating assets:		
Grants payable	(14,500)	0
Increase (decrease) in operating liabilities:		
Accounts payable	75,945	(66,980)
Payroll taxes	(2,546)	1,074
Net cash provided (used) by operating activities	<u>418,030</u>	<u>1,267,475</u>
Cash flows from investing activities:		
Purchase of equipment	(6,905)	(1,642)
(Increase) decrease in cash investments and marketable securities	<u>(328,373)</u>	<u>(1,393,843)</u>
Net cash provided (used) by investing activities	<u>(335,278)</u>	<u>(1,395,485)</u>
Net cash flows	82,752	(128,010)
Cash in bank, beginning of period	<u>484,006</u>	<u>612,016</u>
Cash in bank, end of period	<u>\$ 566,758</u>	<u>484,006</u>

# HANCOCK COUNTY COMMUNITY FOUNDATION, INC.

## NOTES TO FINANCIAL STATEMENTS FOR THE YEARS ENDED DECEMBER 31, 2004 AND 2003

### A. SUMMARY OF SIGNIFICANT ACCOUNTING PRACTICES

**Accounting Basis.** The Organization reports information regarding its financial position and activities according to three classes of net assets: unrestricted net assets, temporarily restricted net assets, and permanently restricted net assets. The accompanying financial statements have been prepared from the books, records and reports of Hancock County Community Foundation, Inc.

**Fixed Assets.** Real estate, property and equipment additions are valued at cost, which does not purport to represent replacement or realizable values.

Depreciation is computed using the straight-line method over the estimated useful life of the asset.

**Net Assets.** Temporarily restricted assets are only temporarily a part of the Foundation and are redistributed when certain conditions are met.

Endowment assets are permanent assets of the Foundation and only the income may be distributed. In certain cases the endowments are designated by a single donor or by an agency and the net earnings of these assets are distributed annually to the designated beneficiary institution.

**Income Taxes.** Hancock County Community Foundation, Inc. is a private, non-profit corporation, incorporated under the Indiana General Not-for-Profit Corporation Act and is exempt from Federal income taxes under Section 501(c)(3) of the Internal Revenue Code. It is also exempt from Indiana franchise or income tax.

**Use of Estimates.** In preparing financial statements in conformity with generally accepted accounting principles, management is required to make estimates and assumptions that affect the reported amounts of assets and liabilities and the disclosure of contingent assets and liabilities at the date of the financial statements and revenues and expenses during the reported period. Actual results could differ from those estimates.

### B. TEMPORARILY RESTRICTED ASSETS

On September 9, 2004, the Foundation entered into an agreement to Administer and track funds raised by and on behalf of the Hancock County Public Library capital fundraising campaign. These funds are to cover the costs associated with the physical construction and furnishing of a main branch library facility.

The Foundation is to retain any investment income earned from these funds plus two (2) percent of the total funds contributed as compensation for the services rendered

# HANCOCK COUNTY COMMUNITY FOUNDATION, INC.

## NOTES TO FINANCIAL STATEMENTS FOR THE YEARS ENDED DECEMBER 31, 2004 AND 2003

### C. INVESTMENTS

Funds of the Foundation are primarily invested in assets of Trusts maintained at the National Bank of Indianapolis and Edward Jones. At December 31, 2004 and 2003, investments including the Trusts' assets comprised:

	Market	Cost
December 31, 2004:		
Greenfield Banking Company		
Restricted Cash - CAPE	\$ 48,085	48,085
National Bank of Indianapolis;		
Cash & equivalents	1,650,721	1,575,180
Bonds & fixed income	1,852,893	1,874,554
Common stocks	5,177,669	3,819,416
Edward Jones Trusts;		
Cash & equivalents	127,942	125,354
Bonds	719,160	721,373
Common stocks	1,550,657	1,371,752
Total	<u>\$11,127,127</u>	<u>9,535,714</u>
December 31, 2003:		
Greenfield Banking Company		
Restricted Cash - CAPE	\$ 204,584	204,584
National Bank of Indianapolis;		
Cash & equivalents	619,477	578,124
Bonds & fixed income	2,205,806	2,138,980
Common stocks	5,396,729	4,504,979
Edward Jones Trusts;		
Cash & equivalents	196,840	174,566
Bonds	718,358	690,999
Common stocks	1,456,961	1,304,096
Total	<u>\$10,798,754</u>	<u>9,596,327</u>



**HANCOCK COUNTY COMMUNITY FOUNDATION**

312 E. Main Street, Greenfield, IN 46140  
317-462-8870 • [www.hccf.cc](http://www.hccf.cc)

NON-PROFIT  
U.S. POSTAGE  
PAID  
GREENFIELD, IN  
PERMIT NO. 300

**2004 ANNUAL REPORT  
SPONSORED BY:**

